

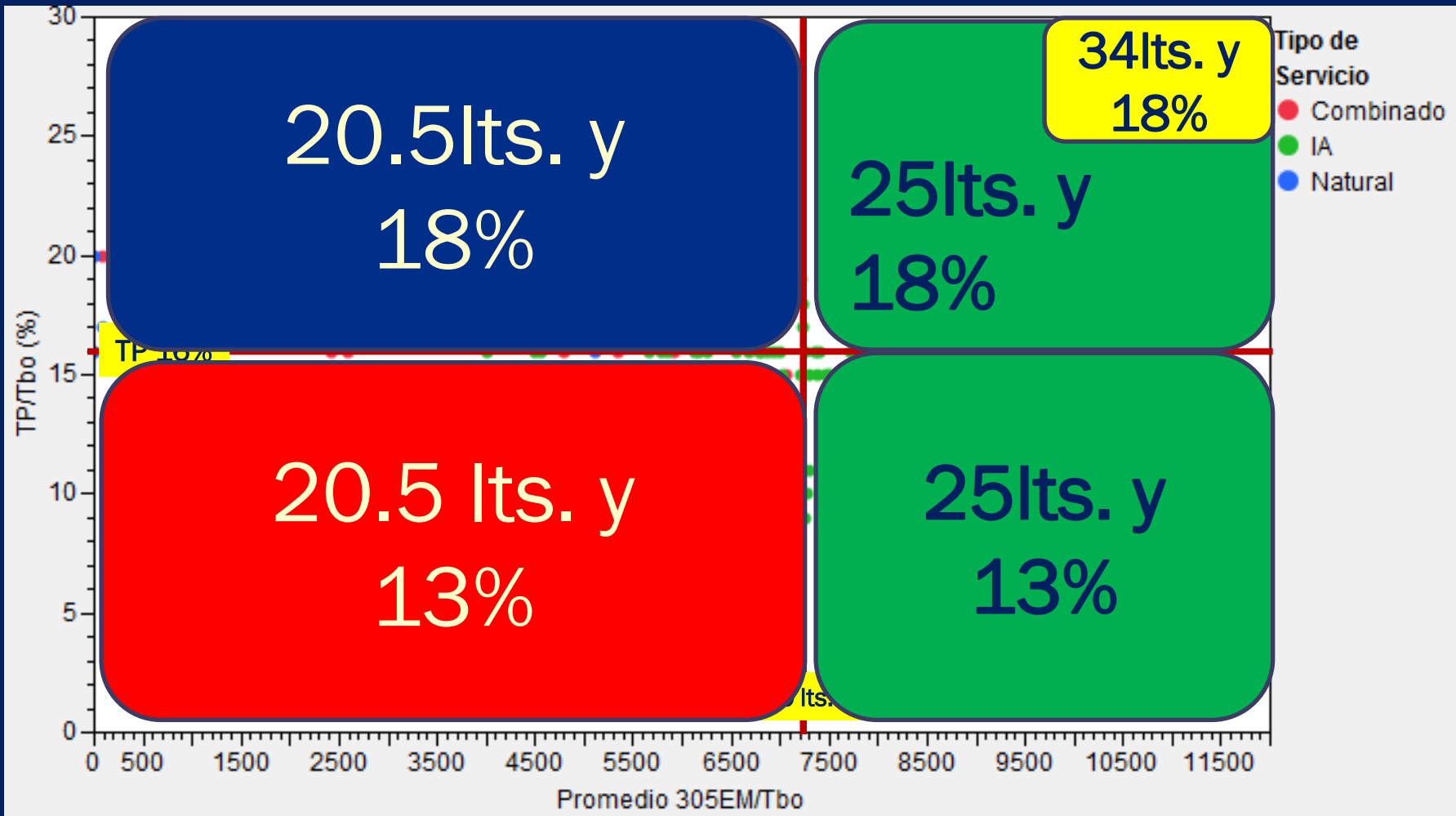
# **Cuál es el IMPACTO de la Eficiencia Reproductiva en los distintos SISTEMAS de Producción?**



**IV JORNADA DAIRYTECH  
18 NOVIEMBRE 2011  
FACULTAD DE CS VETERINARIAS UNR - CASILDA**

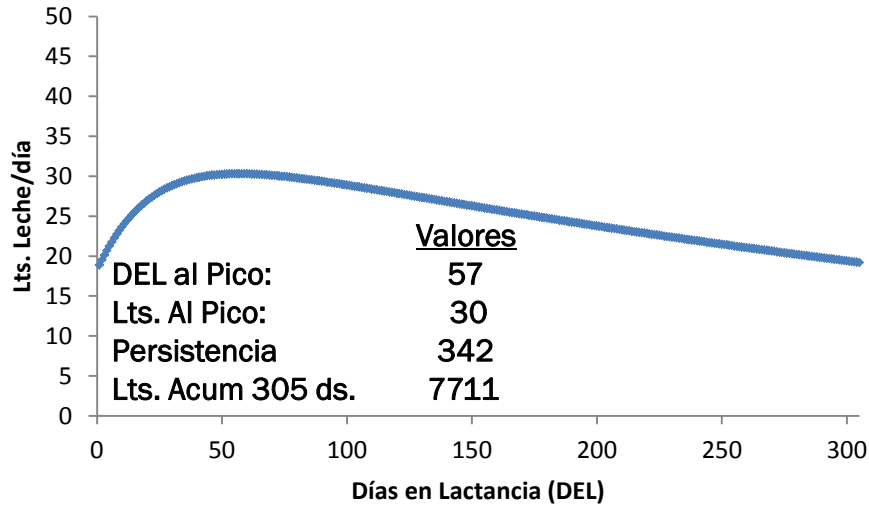
<b>Sistema</b>	<b>34lts.</b>	<b>25lts.</b>	<b>20.5lts.</b>
<b>Produccion leche (Lts./VO/ Día)</b>	34	25	20.5
<b>Precio leche (\$/Lts.)</b>	1.44	1.48	1.48
<b>Ingreso (\$/VO/ Día)</b>	48.62	37	30.34
<b>Consumo Materia Seca (Kg./VO/Día)</b>	24	22.1	19.9
<b>Costo Alimento (\$/Kg. MS promedio)</b>	0.76	0.58	0.47
<b>Costo Alimentación (\$/VO/Día)</b>	18.3	12.9	9.3
<b>Conversion (Kg. Leche/Kg. MS Alimento)</b>	1.42	1.33	1.02
<b>Ingreso Libre alimentación IOFC (\$/VO/dia)</b>	30.38	24.63	20.80
<b>Costo Alimentación expresado como % Ingreso</b>	38%	33%	31%
<b>Precio Vaquillona Preñada (\$/Animal)</b>	9000	9000	8000
<b>Precio Vaca descarte (\$/Animal)</b>	3500	3500	3500
<b>Precio Ternera 50 Kg.</b>	1500	1500	1250

# DISTRIBUCIÓN DE LOS TAMBOS TENIENDO EN CUENTA EL NIVEL PRODUCTIVO (305EM) Y LA PERFORMANCE REPRODUCTIVA (TP).

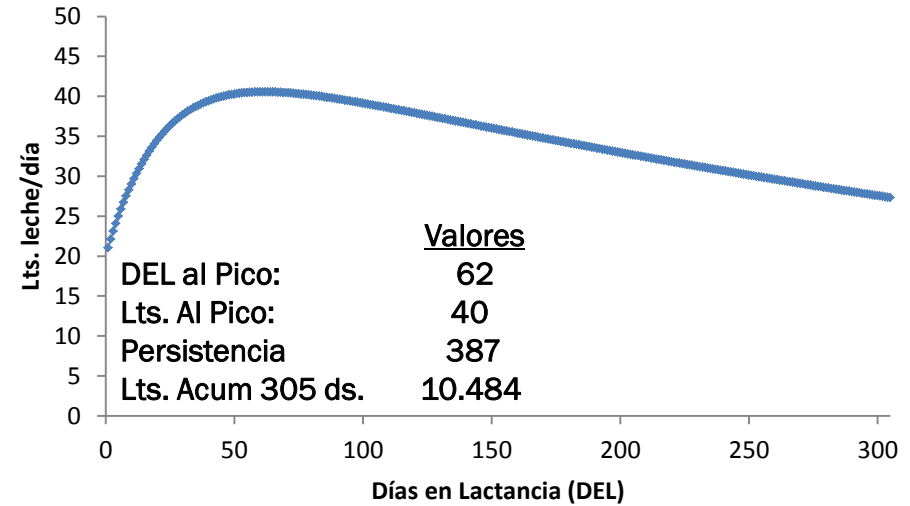


# Curvas Promedio

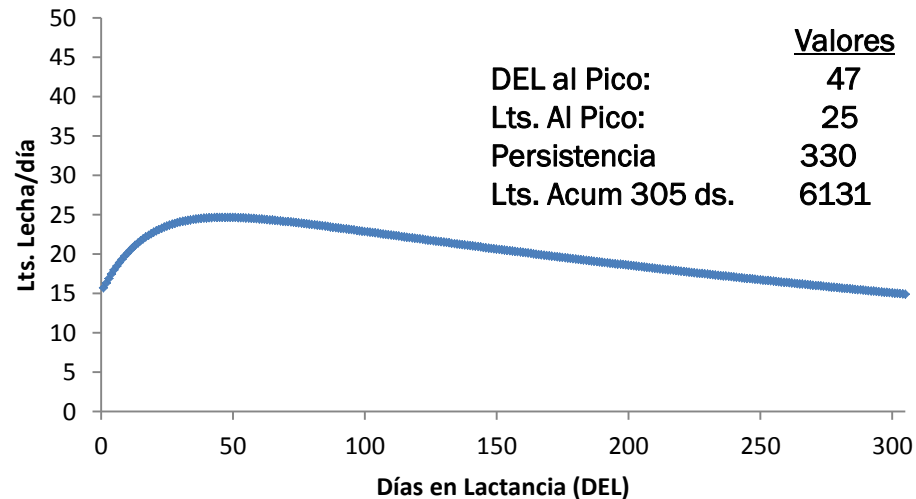
**25 Lts.**



**34 Lts.**

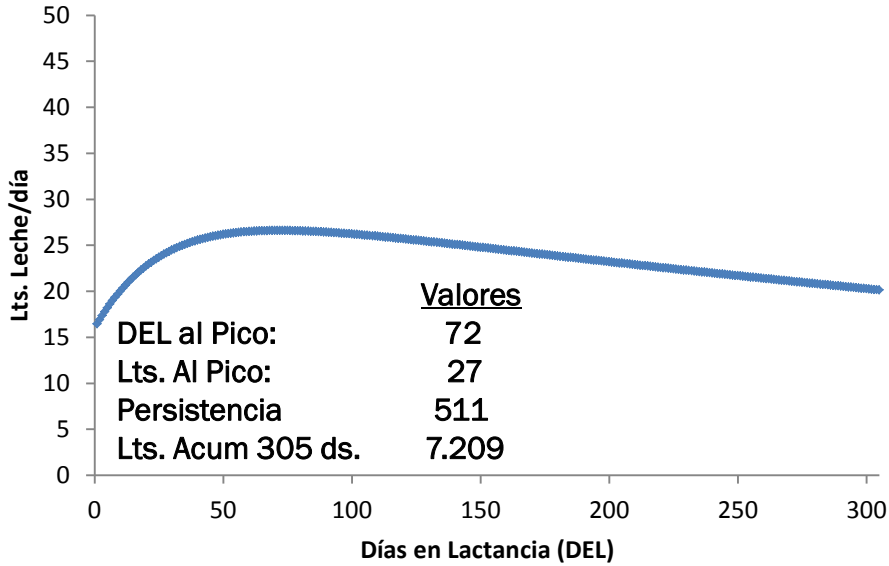


**20,5 Lts.**

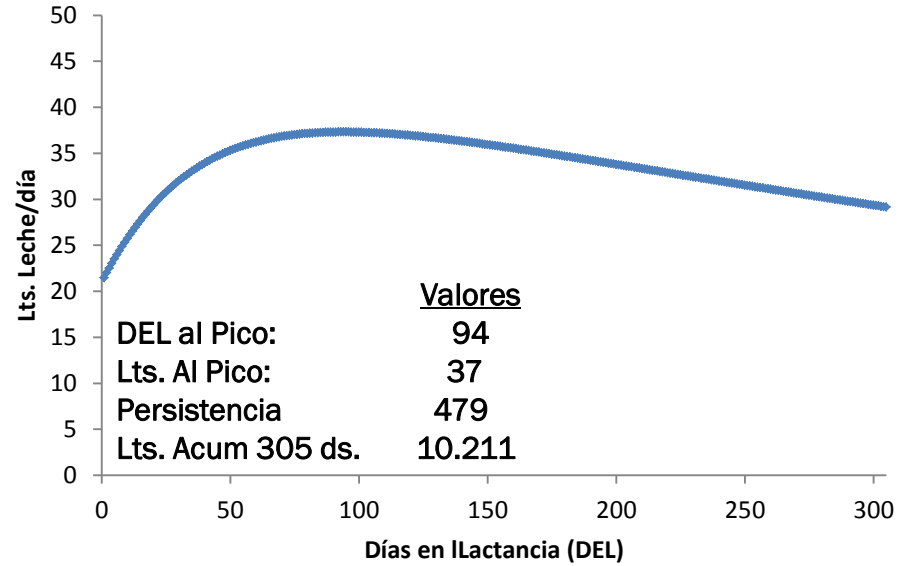


# 1 Lactancia

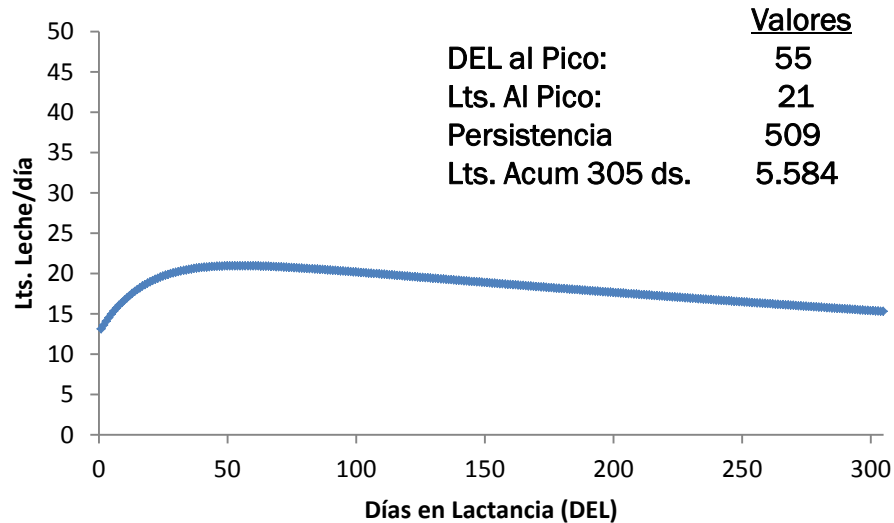
**25 Lts.**



**34 Lts.**

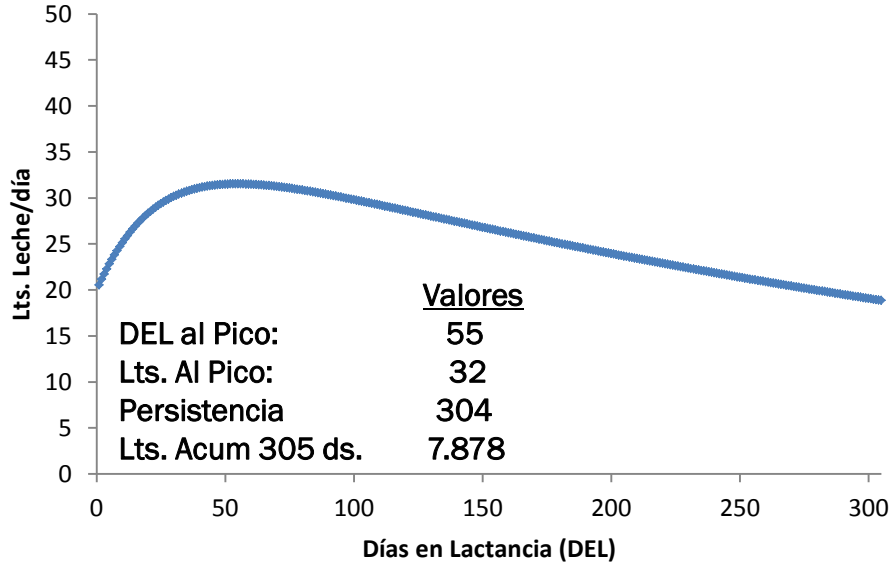


**20,5 Lts.**

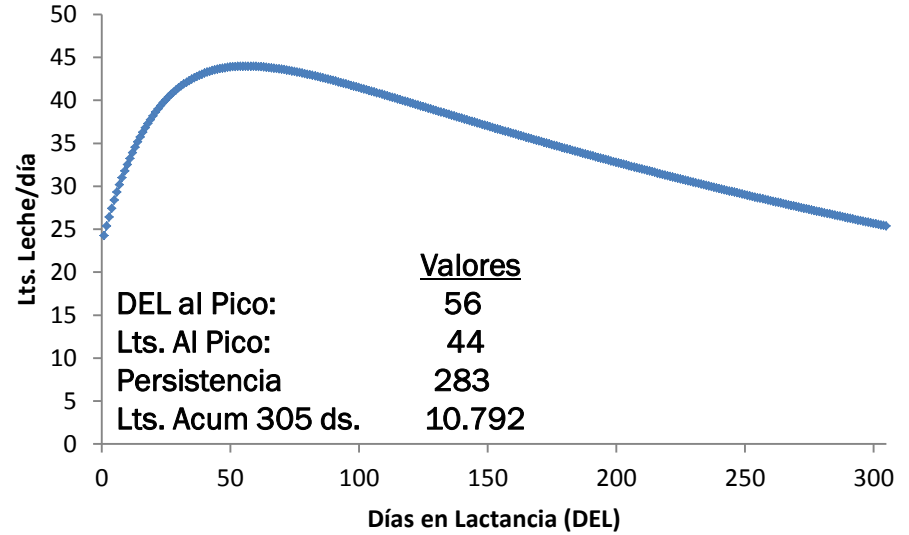


# 2 Lactancia

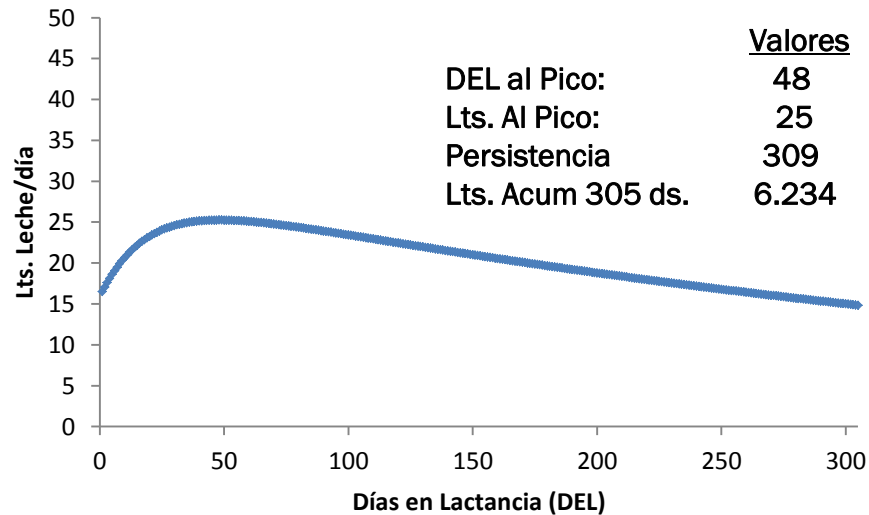
**25 Lts.**



**34 Lts.**

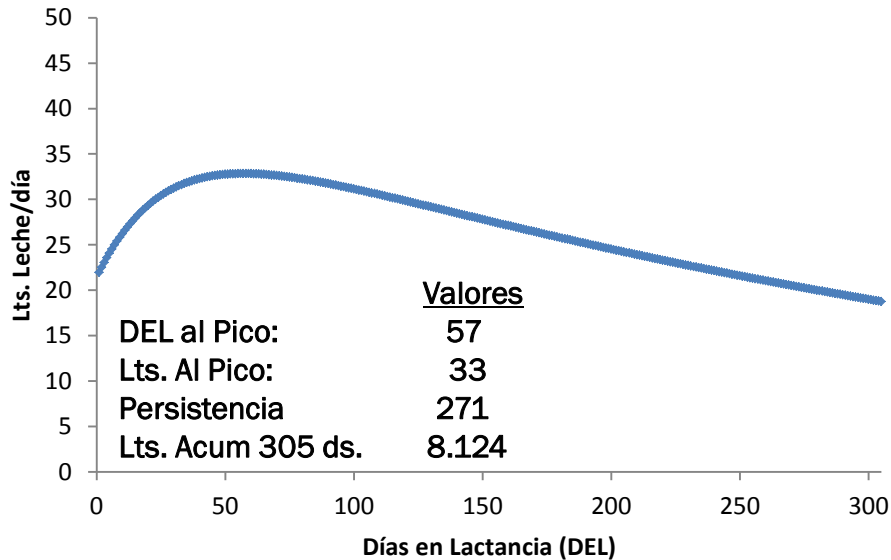


**20,5 Lts.**

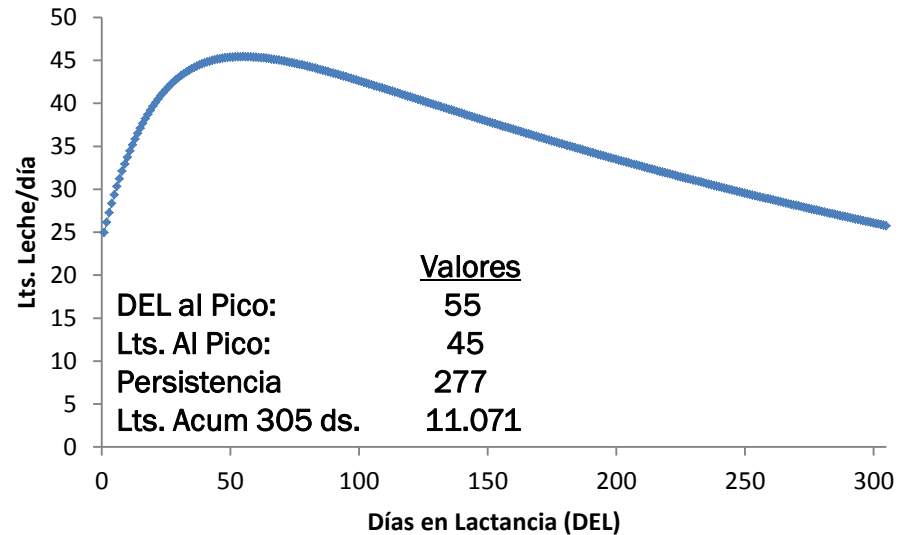


# 3 Lactancia

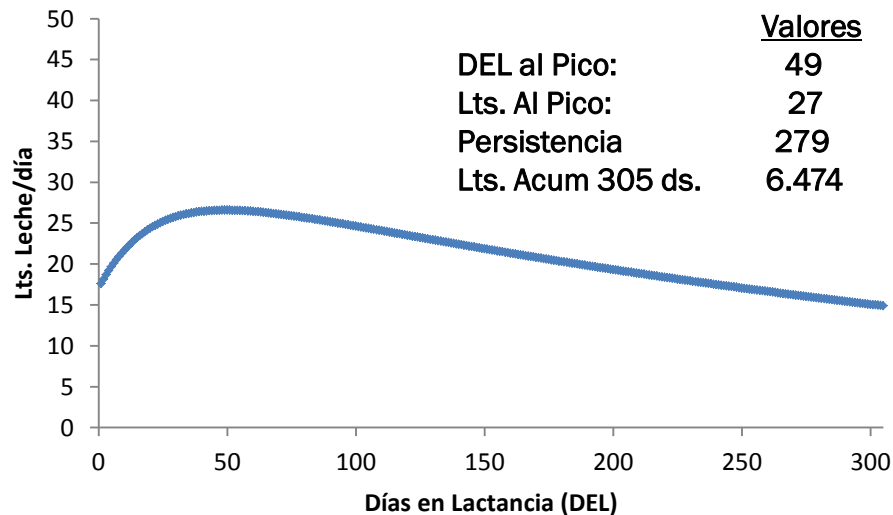
**25 Lts.**



**34 Lts.**

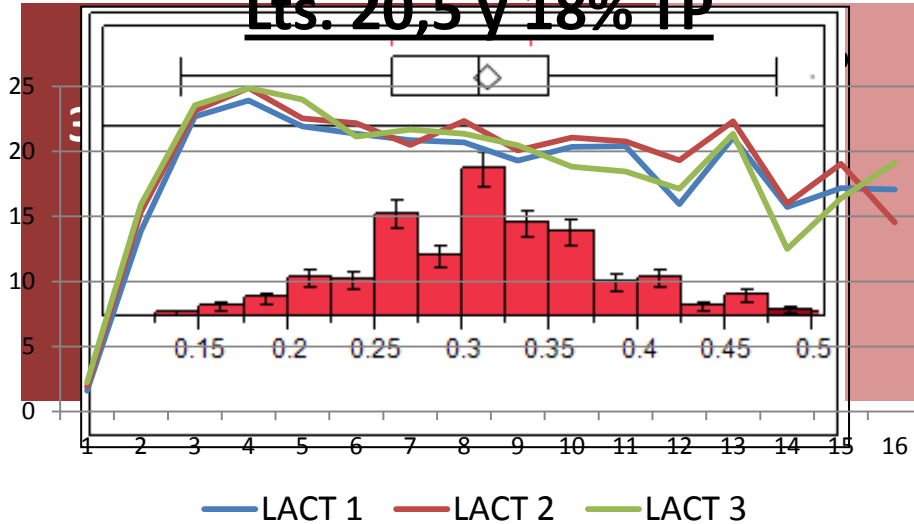


**20,5 Lts.**

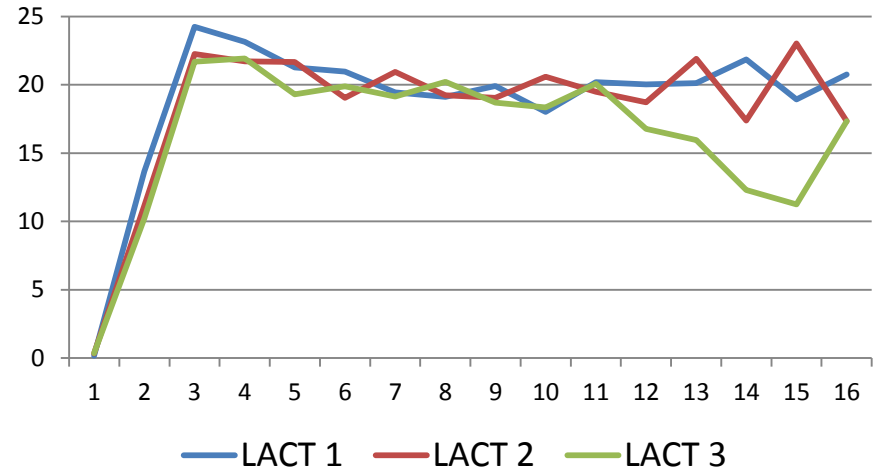


# Probabilidad de Preñez (%)

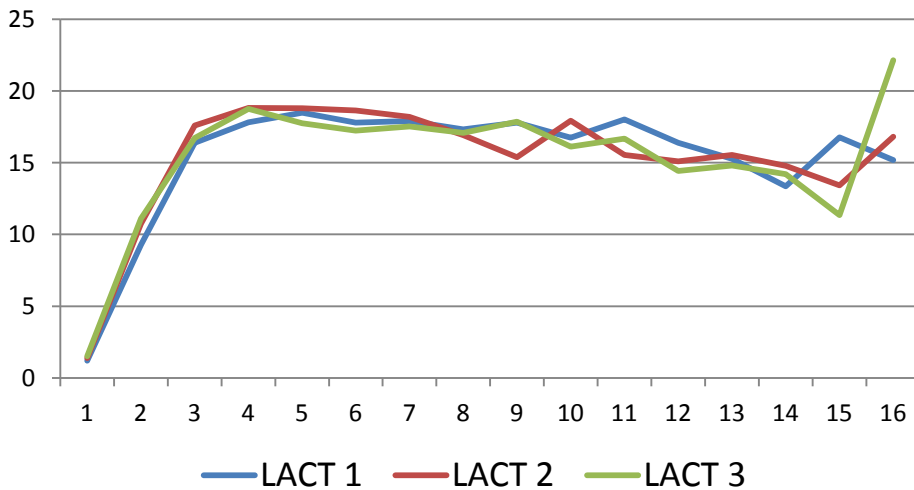
**Lts. 20,5 y 18% TP**



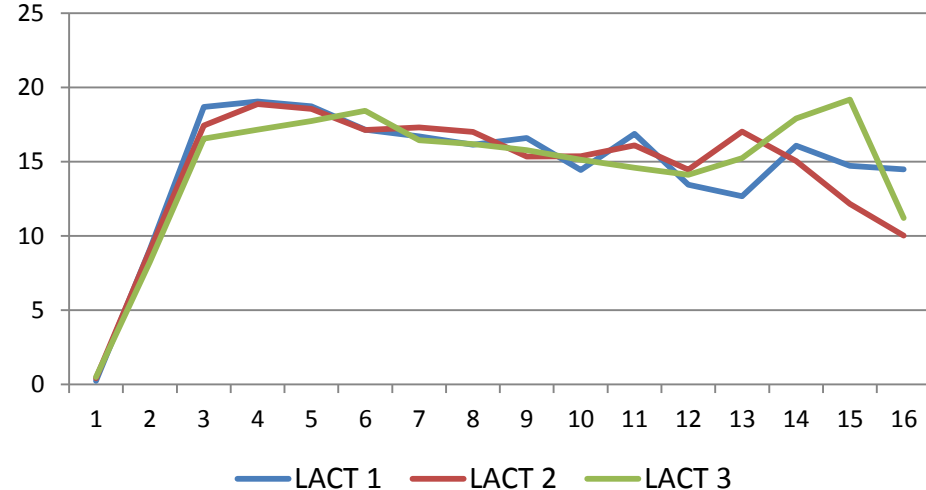
**Lts.34 + 25Lts. 18% TP**



**Lts. 20,5 Lts y 13% TP**



**25 Lts y 13% TP**





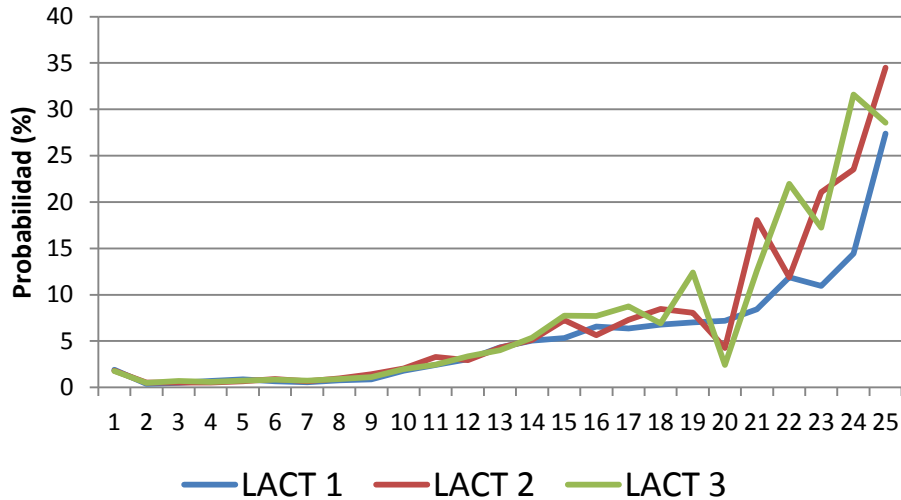
**Porcentaje de Bajas General (muertes + ventas):**

**30%**

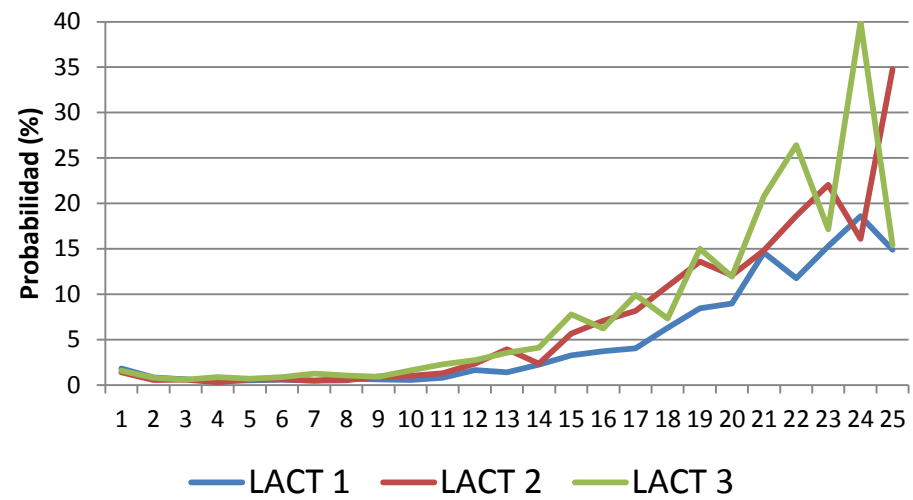
<b>Sistemas</b>	<b>% Bajas</b>	<b>% Muertes</b>
<b>34 Lts. + 25 Lts. y 18% TP</b>	26.8	8.6
<b>20,5 Lts y 18% TP</b>	25.6	7.2
<b>25 Lts. y 13% TP</b>	30.2	10.6
<b>20,5 Lts. y 13% TP</b>	32.1	11.1

# Probabilidad de Descarte (%)

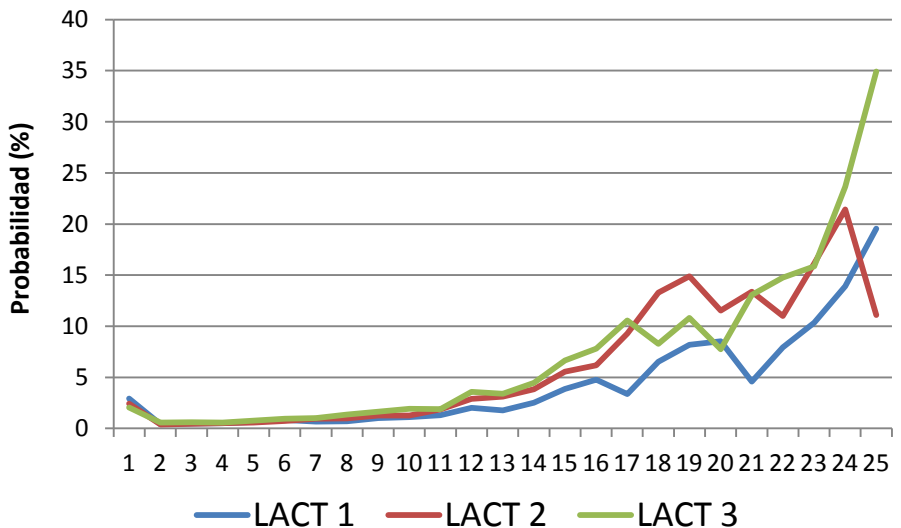
## Lts. 20,5 y 18% TP



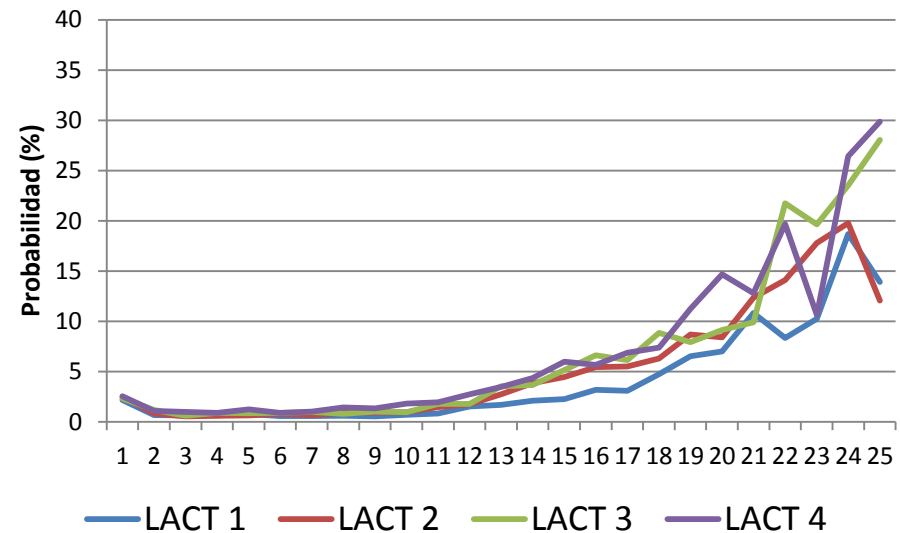
## Lts.34 + 25Lts. 18% TP



## Lts. 20,5 Lts y 13% TP

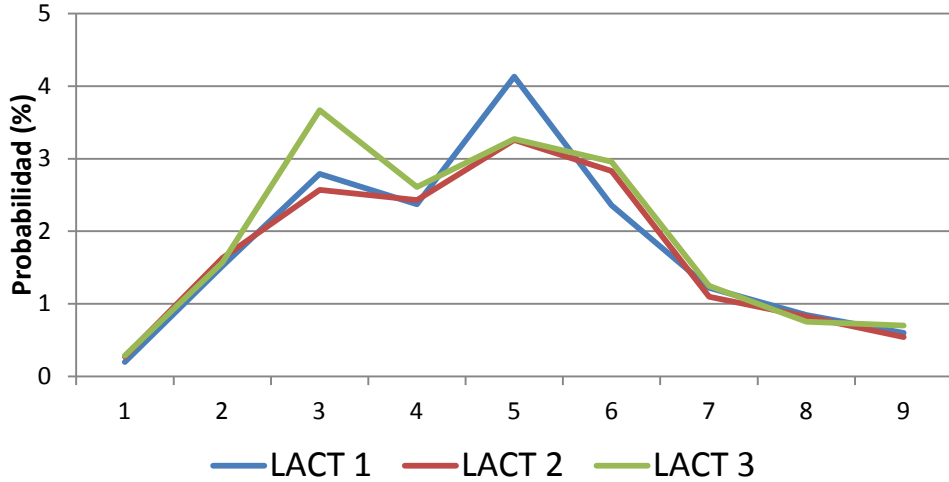


## 25 Lts y 13% TP

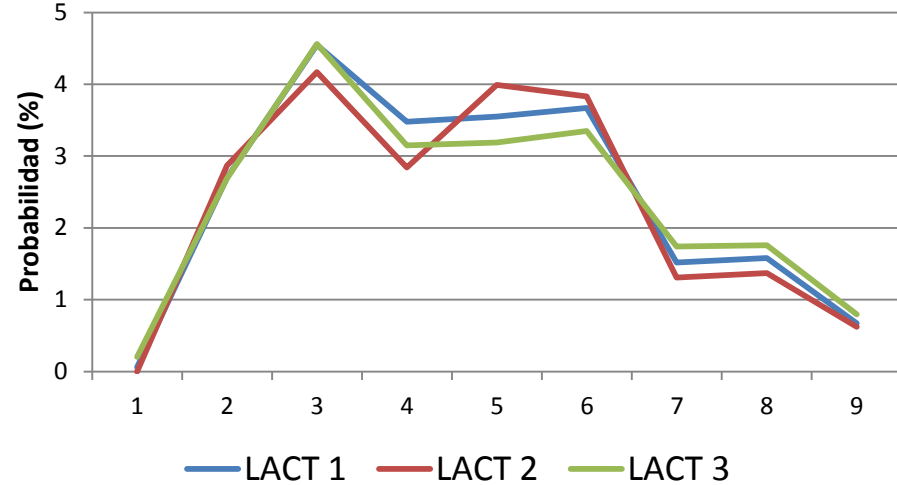


# Probabilidad de Aborto (%)

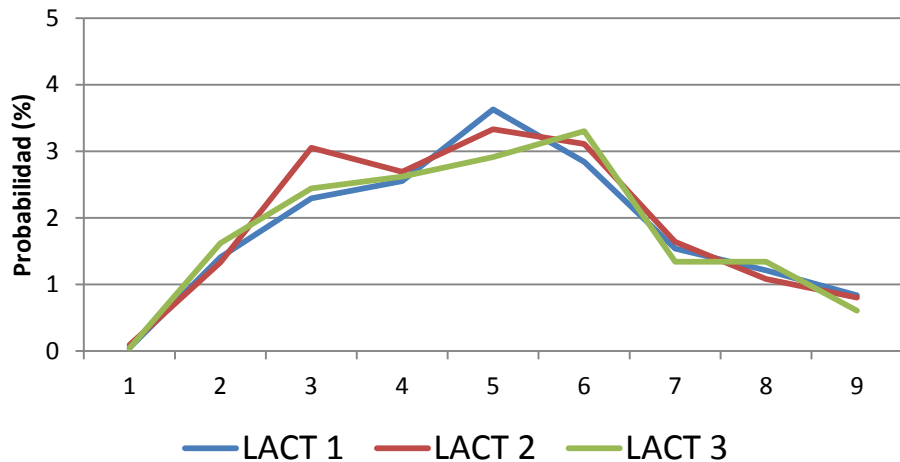
## Lts. 20,5 y 18% TP



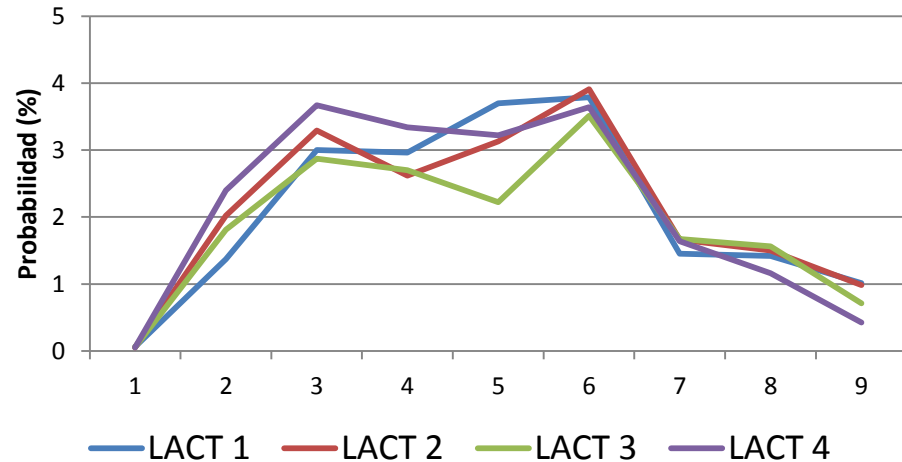
## Lts.34 + 25Lts. 18% TP



## Lts. 20,5 Lts y 13% TP



## 25 Lts y 13% TP



## Sistemas

## Días en promedio de la gestación al Aborto

## Días promedio al diagnostico de preñez

34 Lts. + 25 Lts. y 18% TP

20,5 Lts y 18% TP

25 Lts. y 13% TP

20,5 Lts. y 13% TP

114.5

117.5

126.1

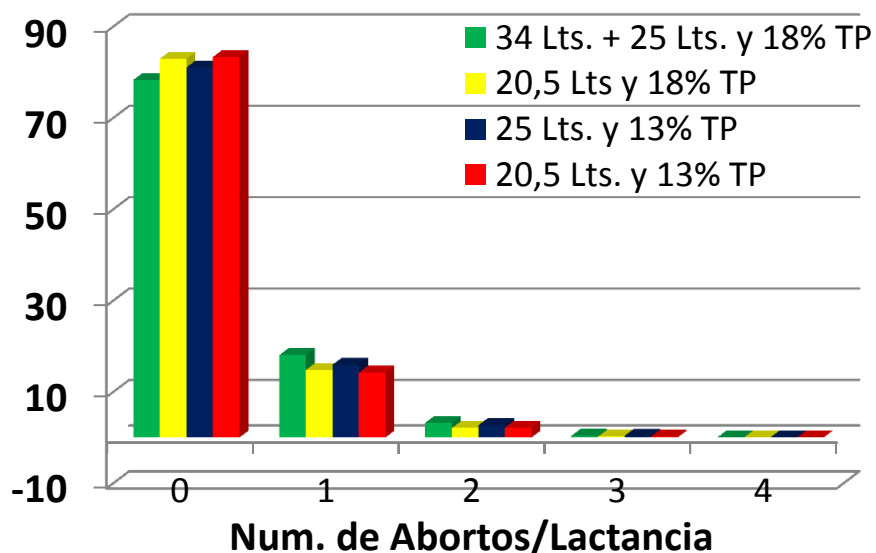
126.6

52

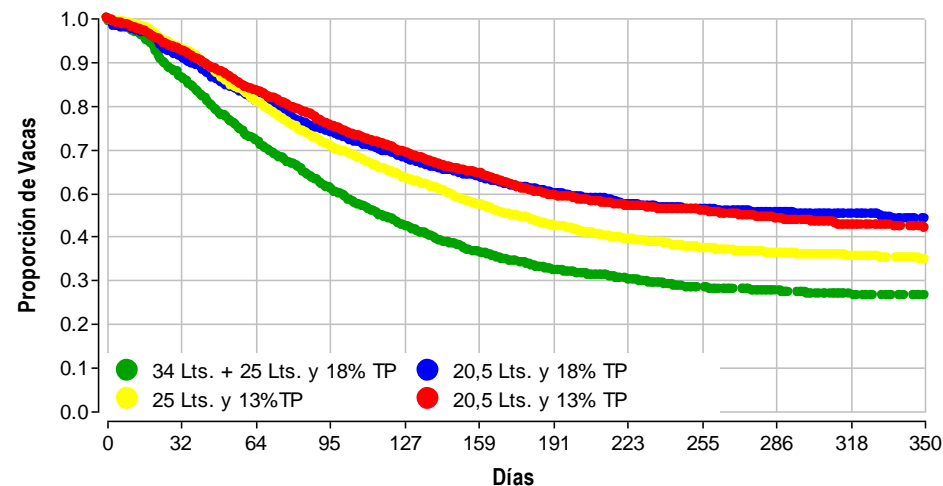
55

60

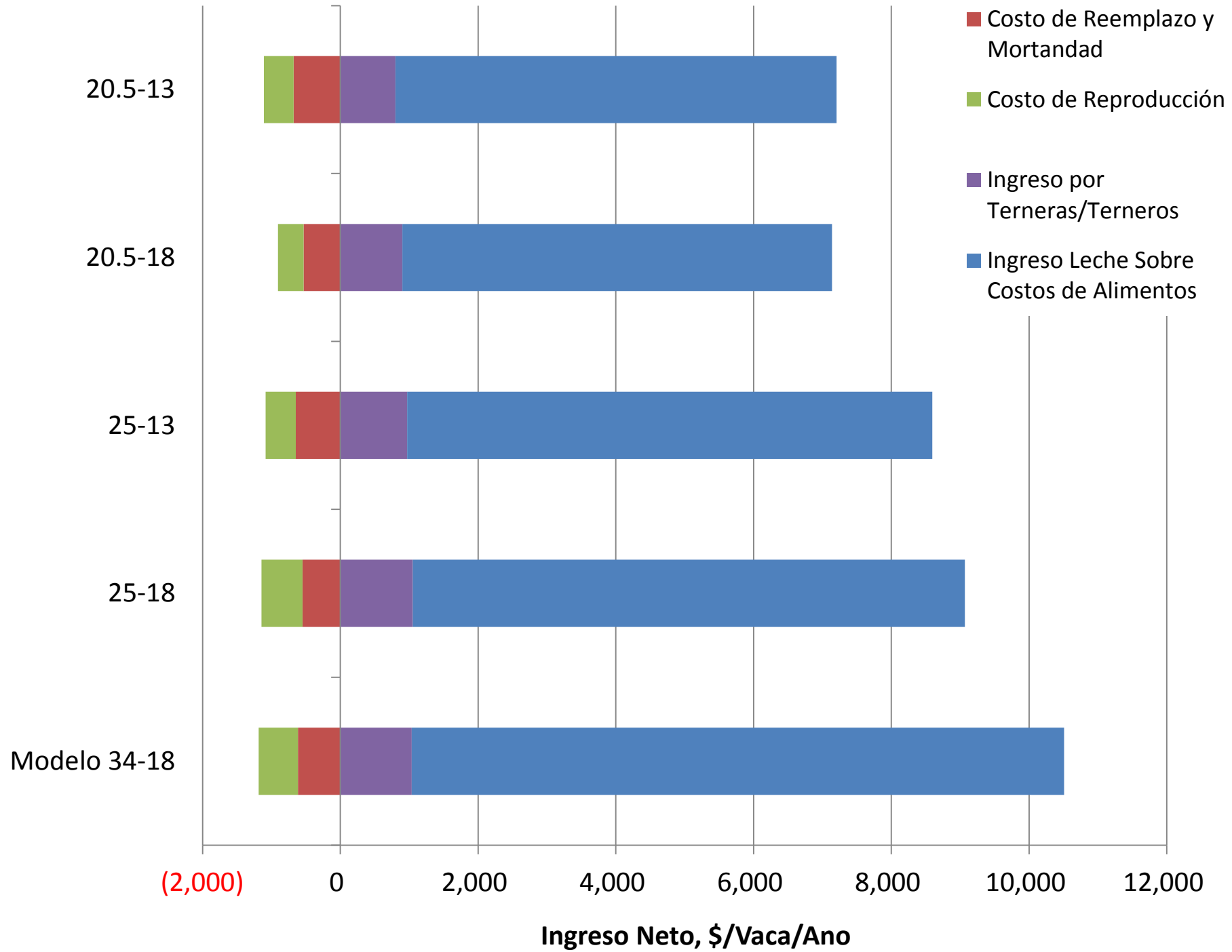
61



## Días a Preñez luego de un Aborto



Sistema (Produccion, lts. y Tasa de Preñez a 21 Dias, %)



(2,000)

0

2,000

4,000

6,000

8,000

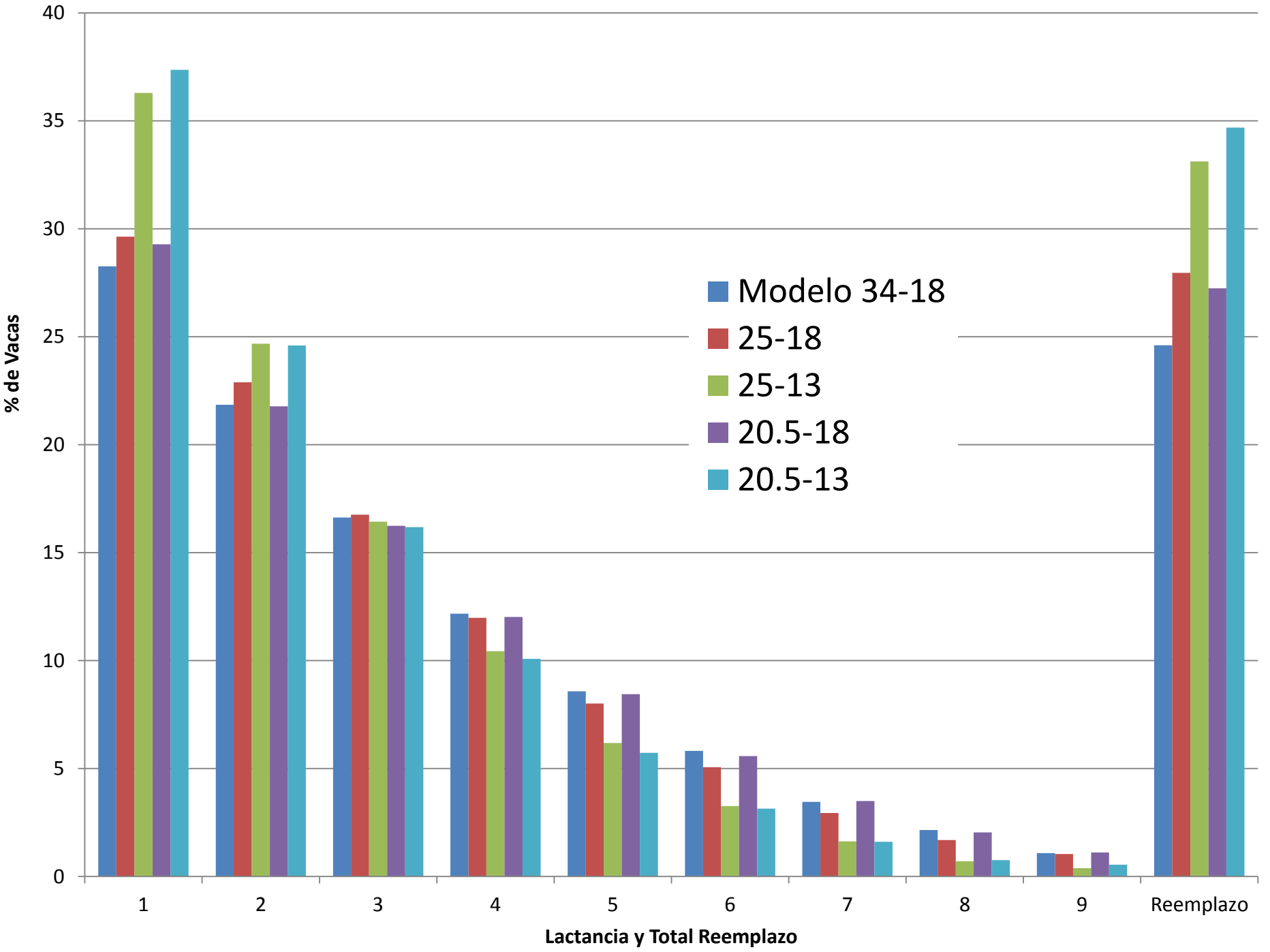
10,000

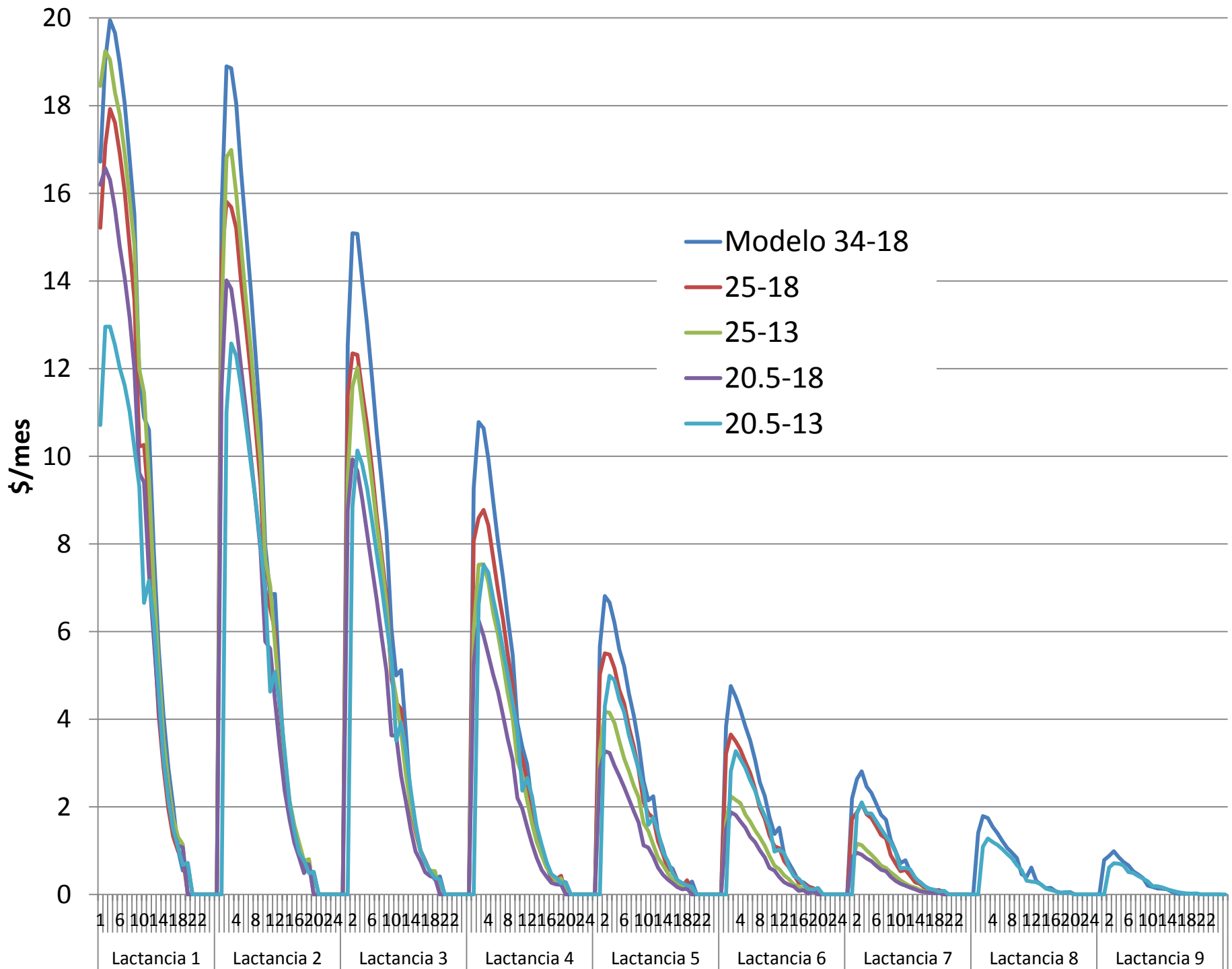
12,000

Ingreso Neto, \$/Vaca/Ano

- Costo de Reemplazo y Mortandad
- Costo de Reproducción
- Ingreso por Terneras/Terberos
- Ingreso Leche Sobre Costos de Alimentos

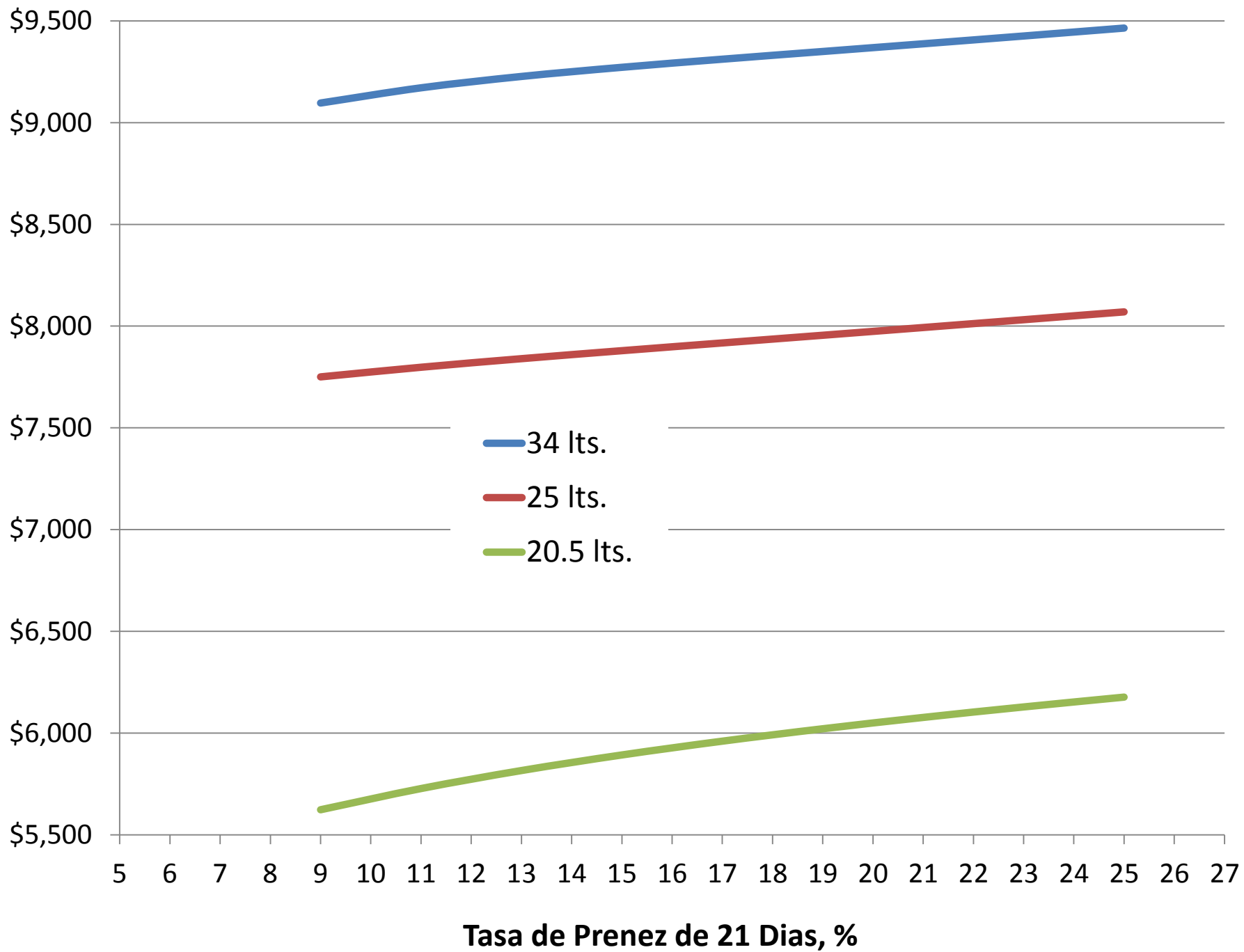
<b>Costo/Ingreso</b>	<b>Ingreso Neto (\$/vaca por año)</b>				
	<b>Modelo 34-18</b>	<b>25- 18</b>	<b>25- 13</b>	<b>20.5- 18</b>	<b>20.5- 13</b>
Ingreso Leche					
Sobre Costos de Alimentos	9,471	8,016	7,622	6,239	6,403
Costo de Reemplazo y Mortandad	(614)	(550)	(645)	(532)	(678)
Costo de Reproducción	(570)	(595)	(439)	(372)	(430)
Ingreso de Terneras/Terberos	1,037	1,052	972	901	802
<b>Total Ingreso Neto</b>	<b>9,324</b>	<b>7,924</b>	<b>7,509</b>	<b>6,236</b>	<b>6,096</b>

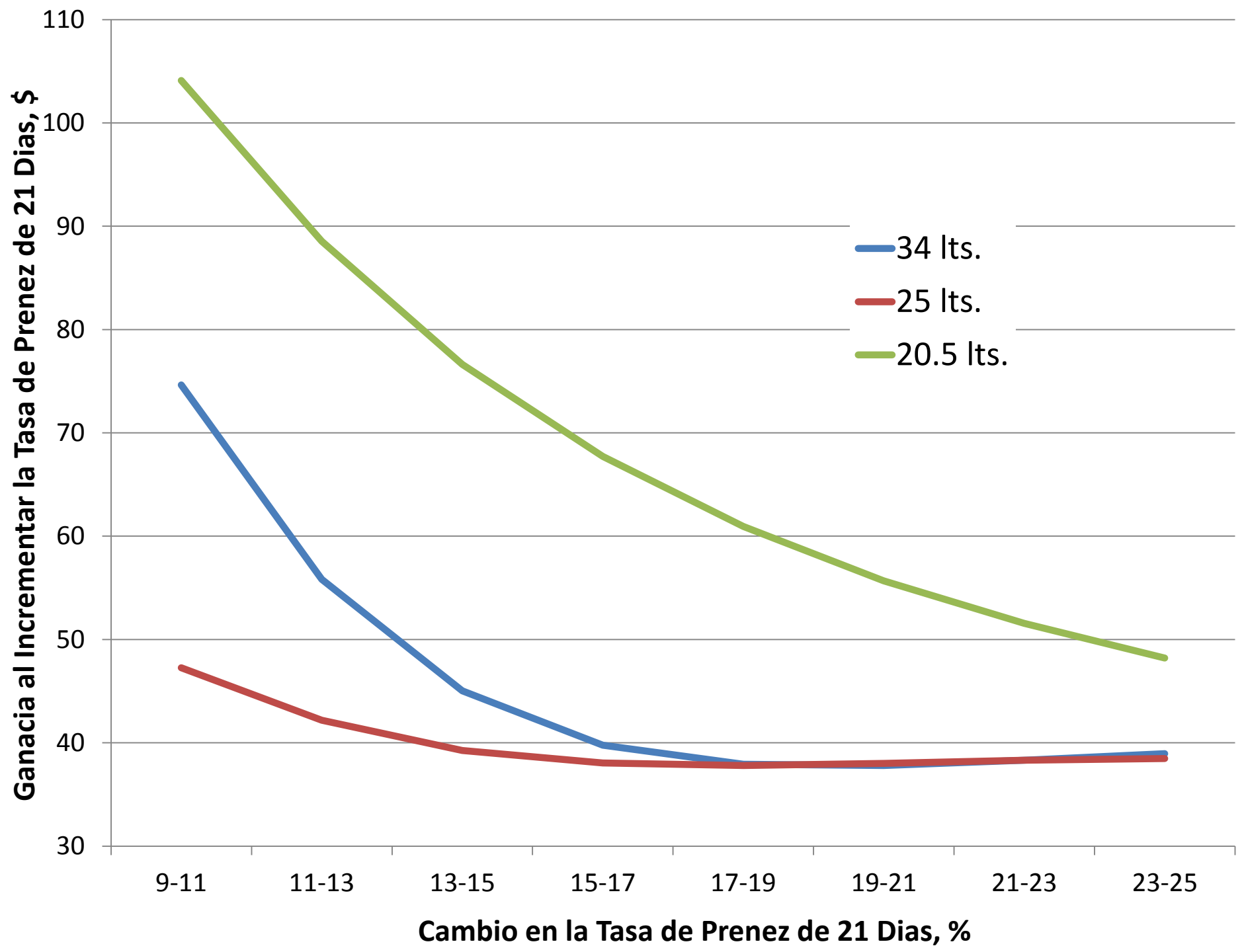


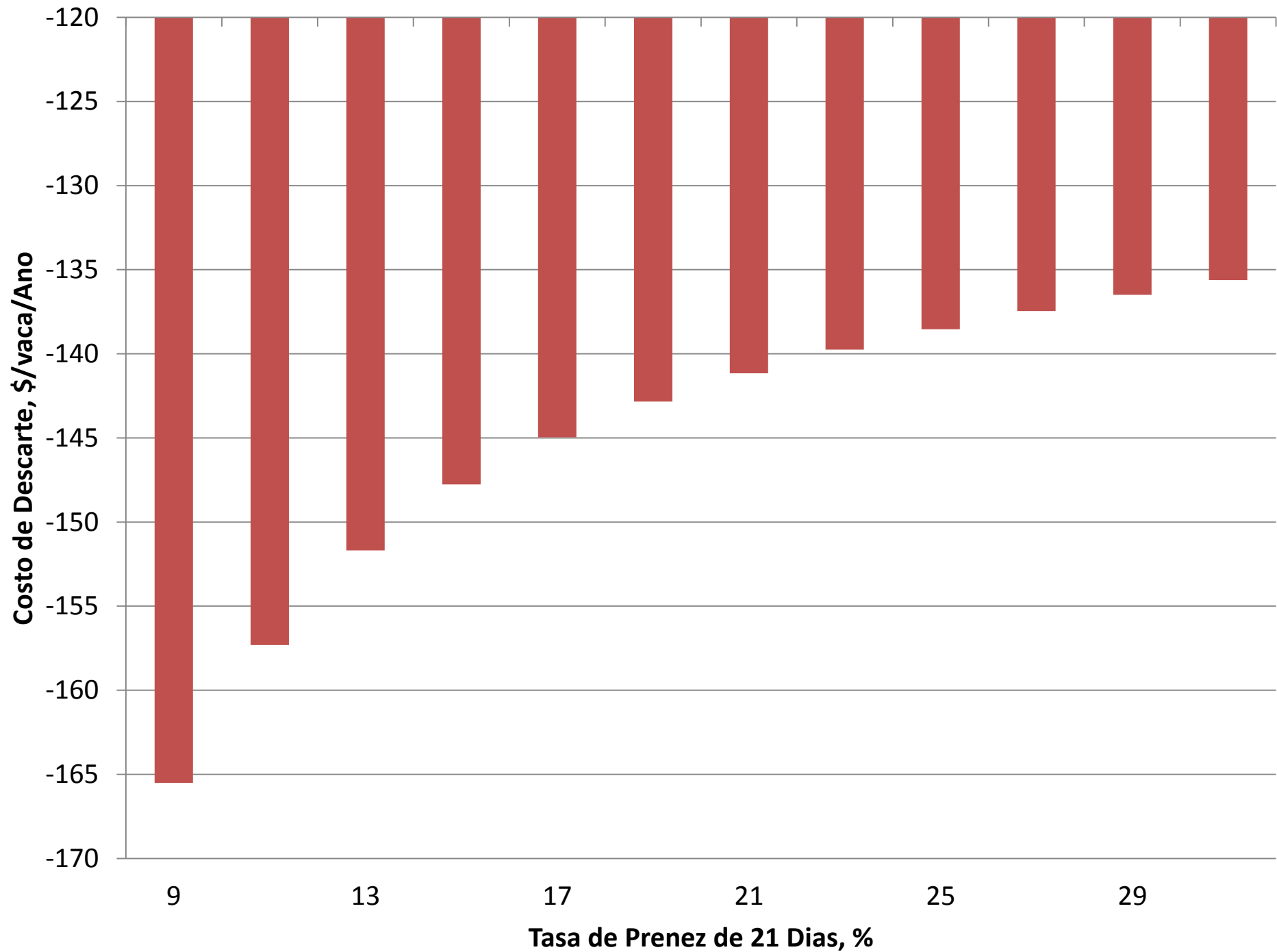


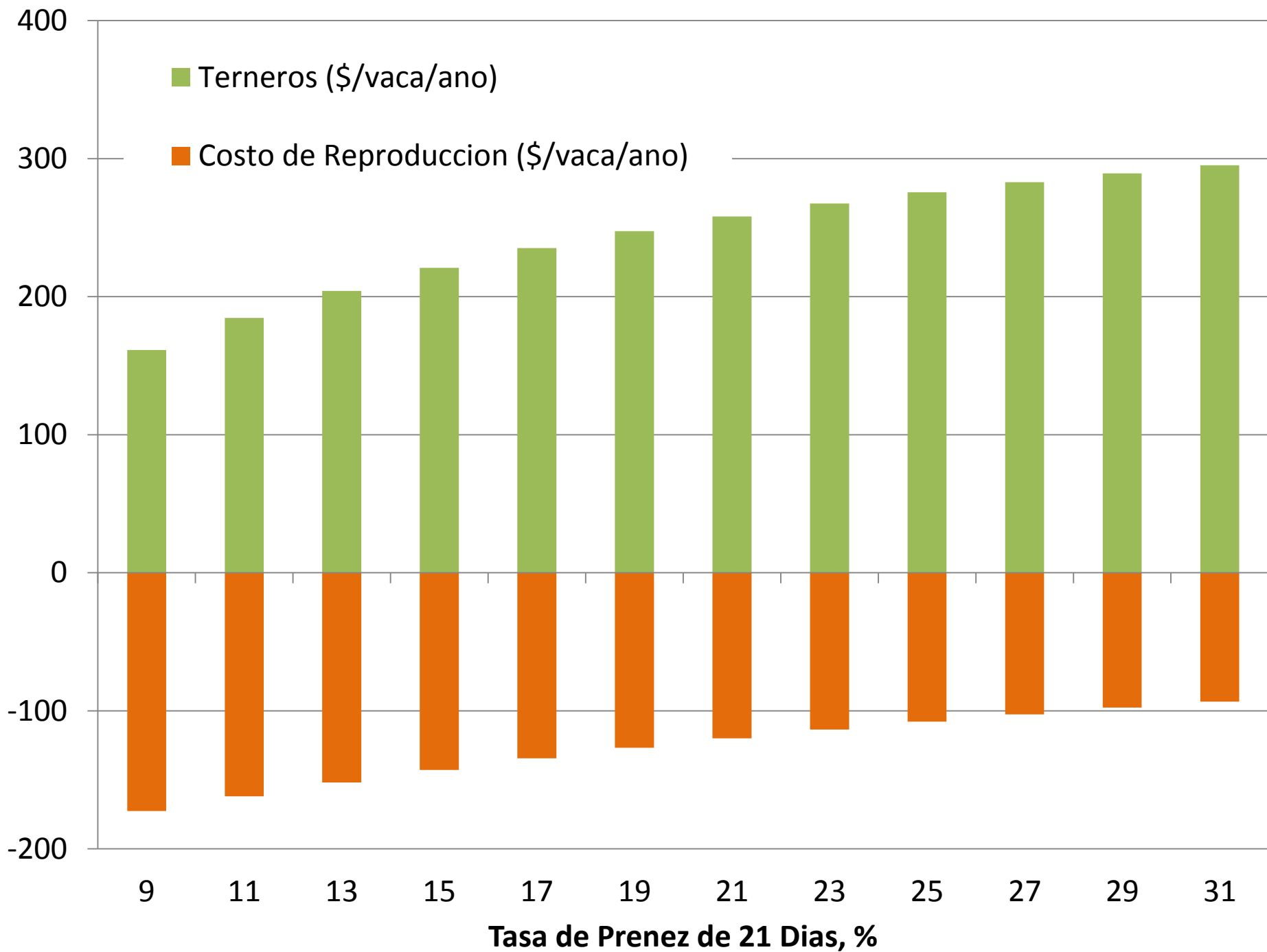


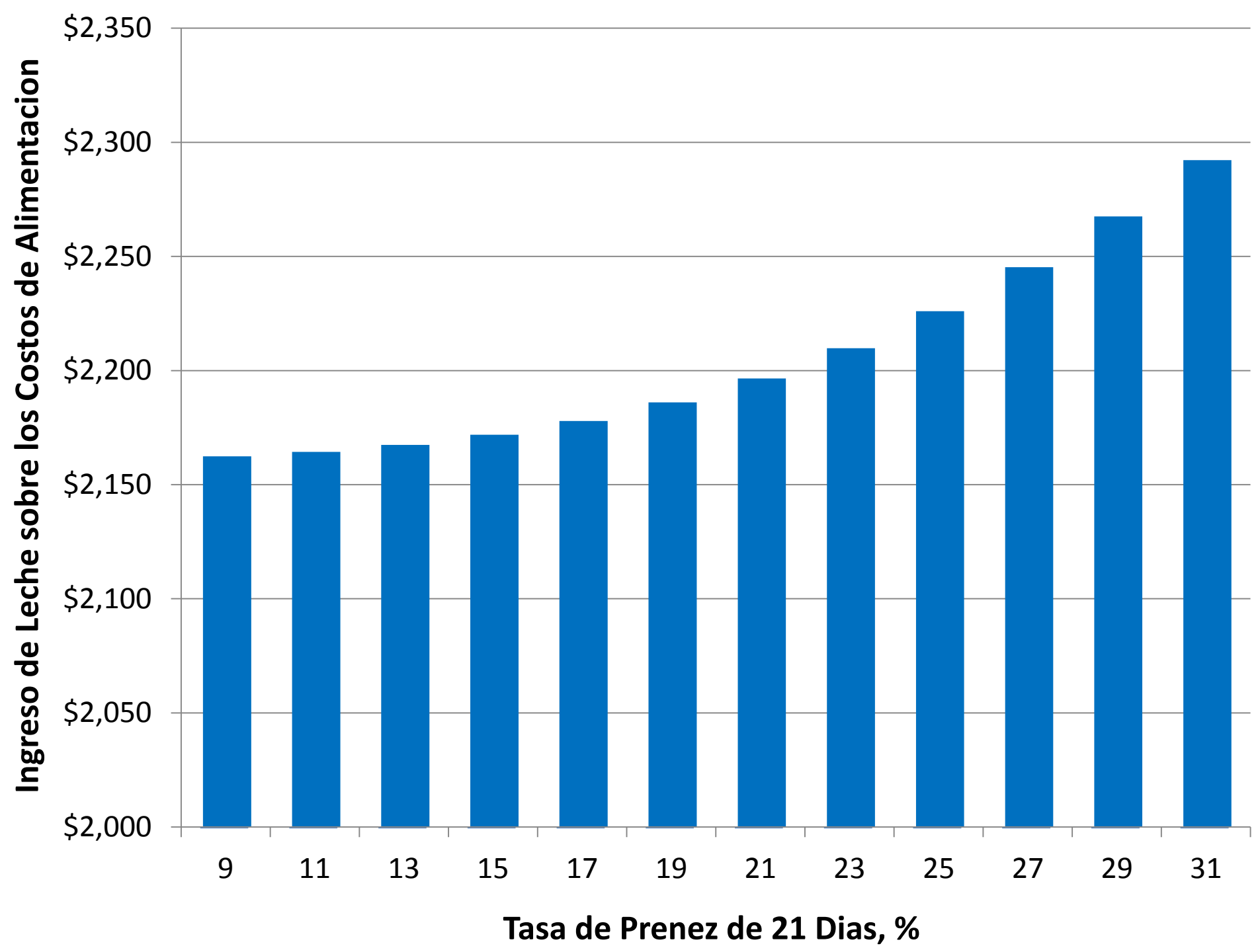
**Ingreso Neto, \$/Vaca/Ano**









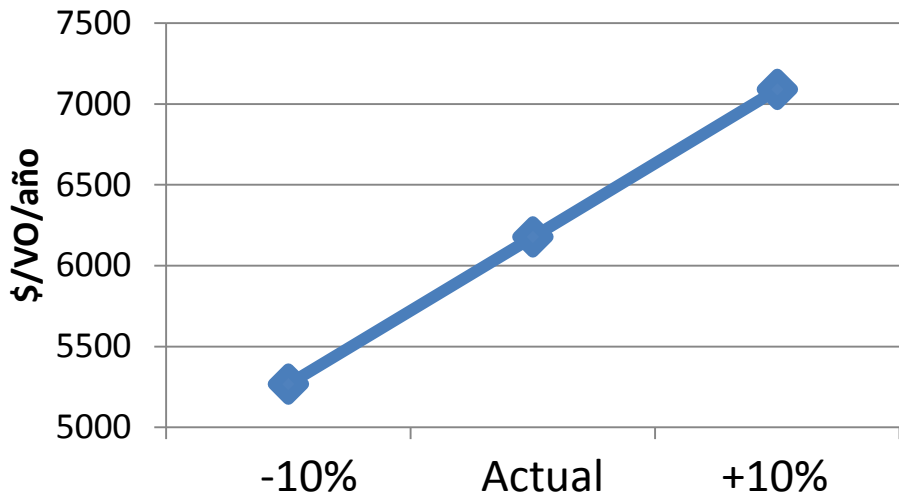




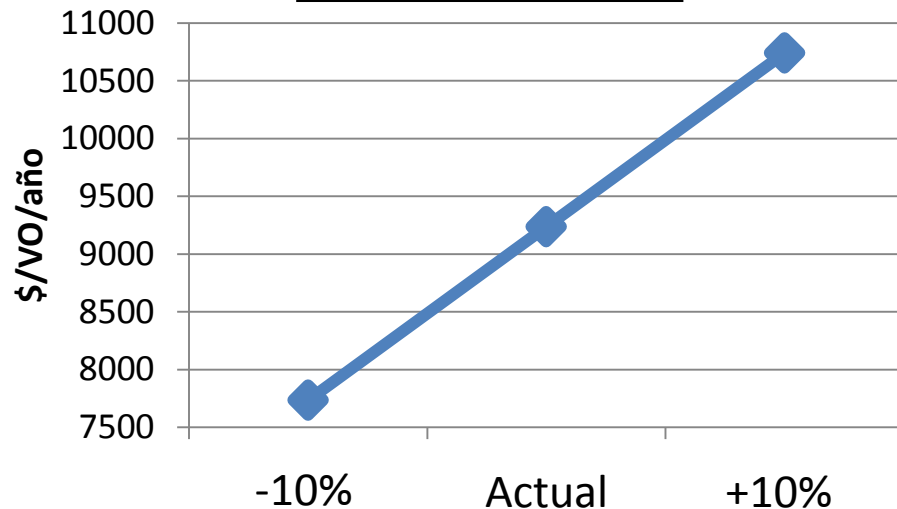
**Qué IMPACTO tiene sobre el Retorno Económico  
un cambio en el precio de la leche  
en cada sistema?**

# Retorno según el % de Aumento o Disminución del \$/Litro de Leche

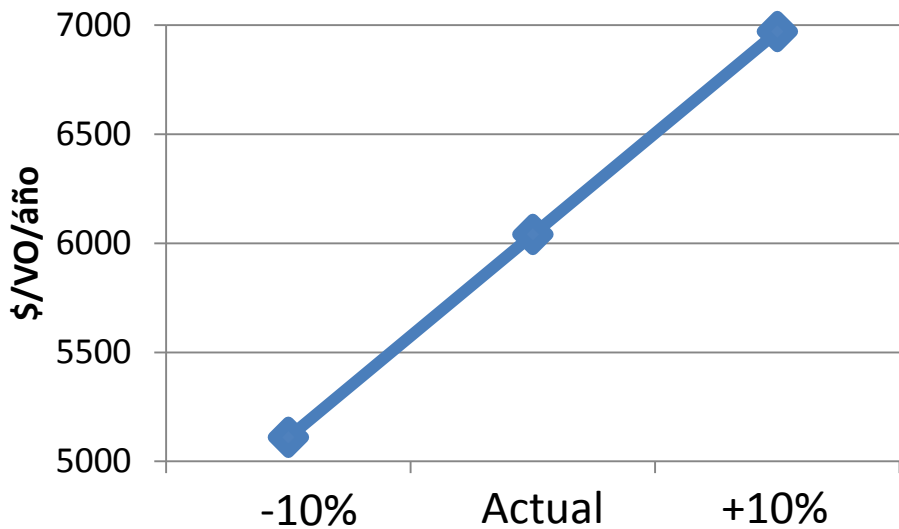
## 20,5Lts. Y 18%TP



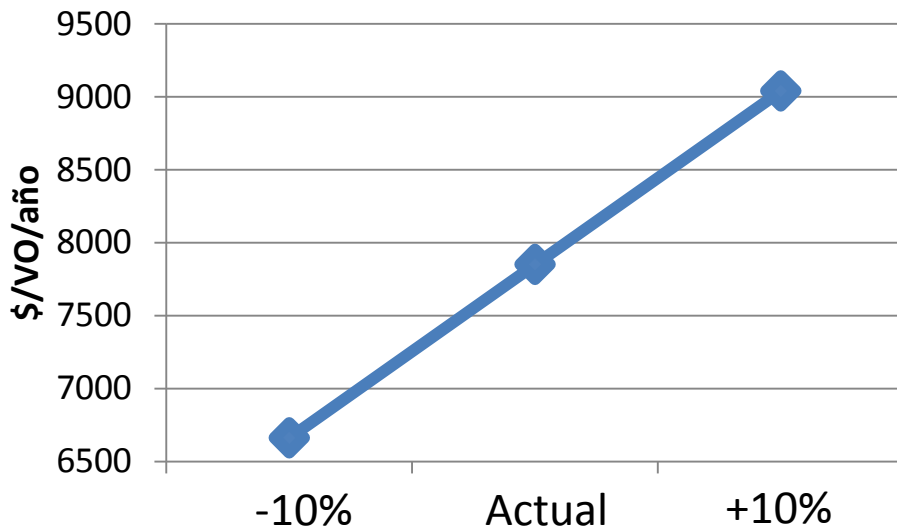
## 34Lts. Y 18%TP



## 20,5Lts. Y 13%TP



## 25Lts. Y 18%TP



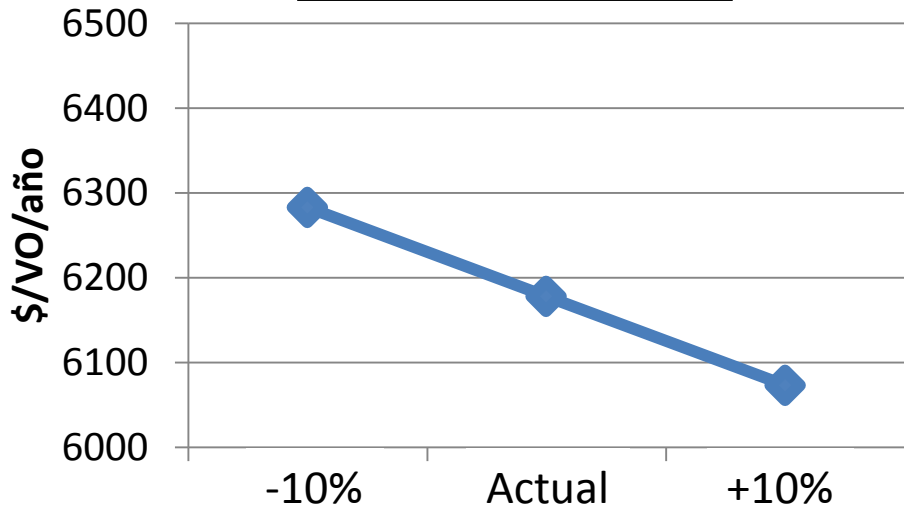
**Qué IMPACTO tiene sobre el Retorno Económico  
Una variación del precio de la Vaquillona  
de Reemplazo en cada sistema?**



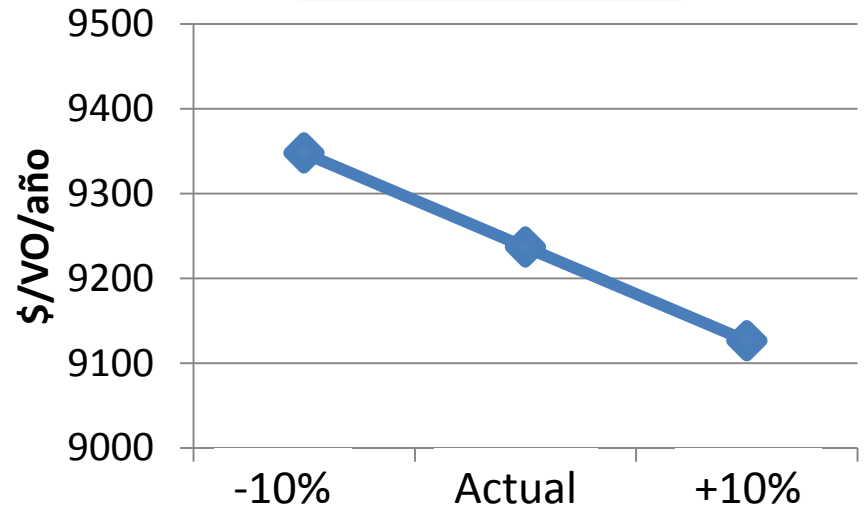


# Retorno según el % de Aumento o Disminución del Costo de la Vaquilla de Reemplazo

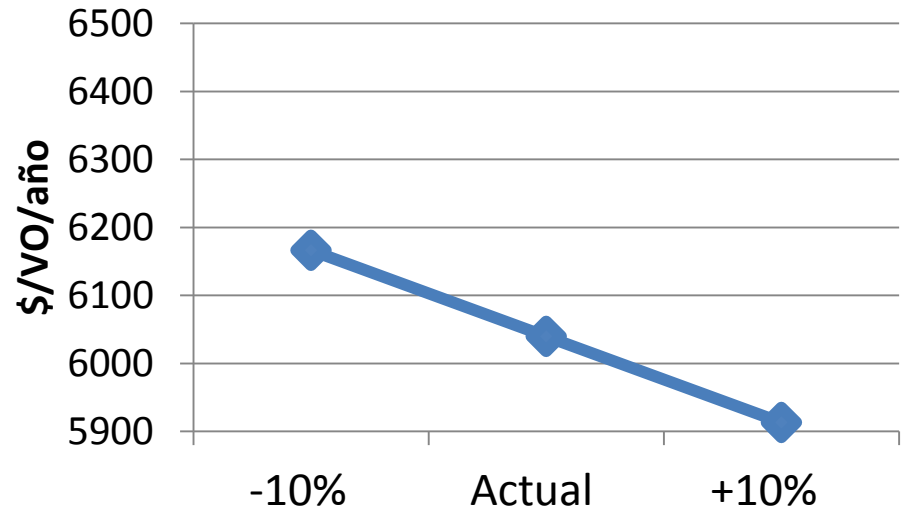
20,5Lts. Y 18%TP



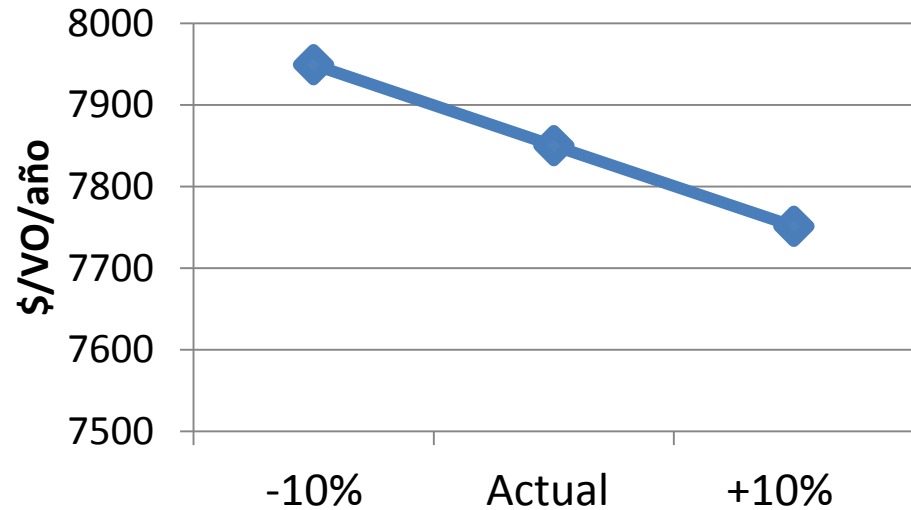
34Lts. Y 18%TP



20,5Lts. Y 13%TP



25Lts. Y 18%TP



**MUCHAS GRACIAS**