

Cuál es el IMPACTO de la Eficiencia Reproductiva en los distintos SISTEMAS de Producción en Argentina?



Ariel Capitaine Funes, Mónica Piccardi, y Victor E. Cabrera

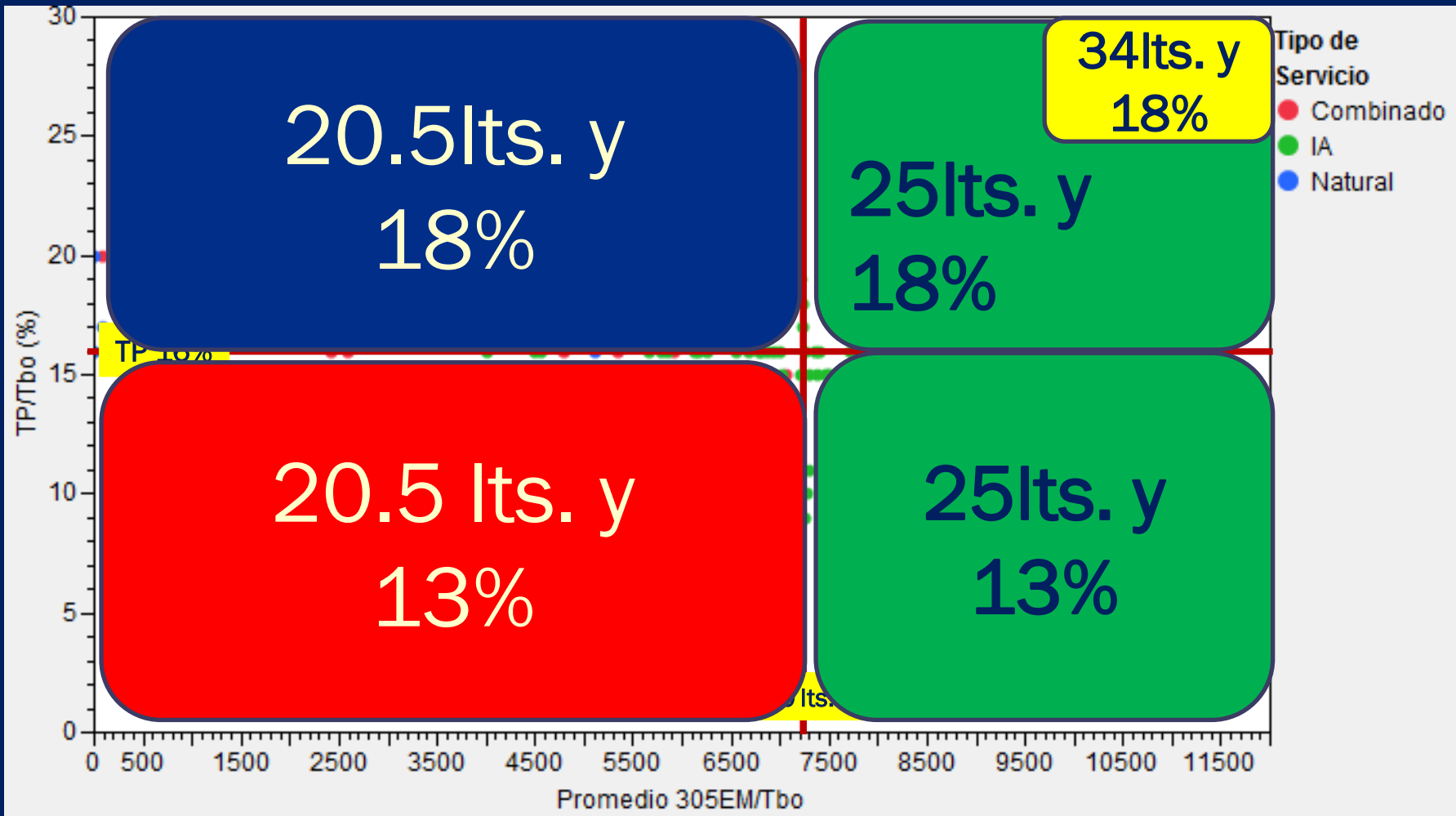
IV JORNADA DAIRYTECH

18 NOVIEMBRE 2011

FACULTAD DE CS VETERINARIAS UNR - CASILDA

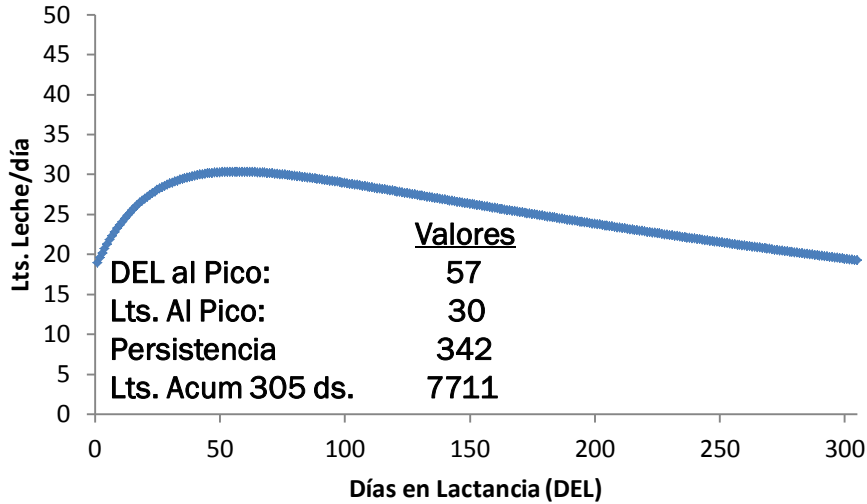
Sistema	34lts.	25lts.	20.5lts.
Produccion leche (Lts./VO/ Día)	34	25	20.5
Precio leche (\$/Lts.)	1.44	1.48	1.48
Ingreso (\$/VO/ Día)	48.62	37	30.34
Consumo Materia Seca (Kg./VO/Día)	24	22.1	19.9
Costo Alimento (\$/Kg. MS promedio)	0.76	0.58	0.47
Costo Alimentación (\$/VO/Día)	18.3	12.9	9.3
Conversion (Kg. Leche/Kg. MS Alimento)	1.42	1.33	1.02
Ingreso Libre alimentación IOFC (\$/VO/dia)	30.38	24.63	20.80
Costo Alimentación expresado como % Ingreso	38%	33%	31%
Precio Vaquillona Preñada (\$/Animal)	9000	9000	8000
Precio Vaca descarte (\$/Animal)	3500	3500	3500
Precio Ternera 50 Kg.	1500	1500	1250

DISTRIBUCIÓN DE LOS TAMBOS TENIENDO EN CUENTA EL NIVEL PRODUCTIVO (305EM) Y LA PERFORMANCE REPRODUCTIVA (TP).

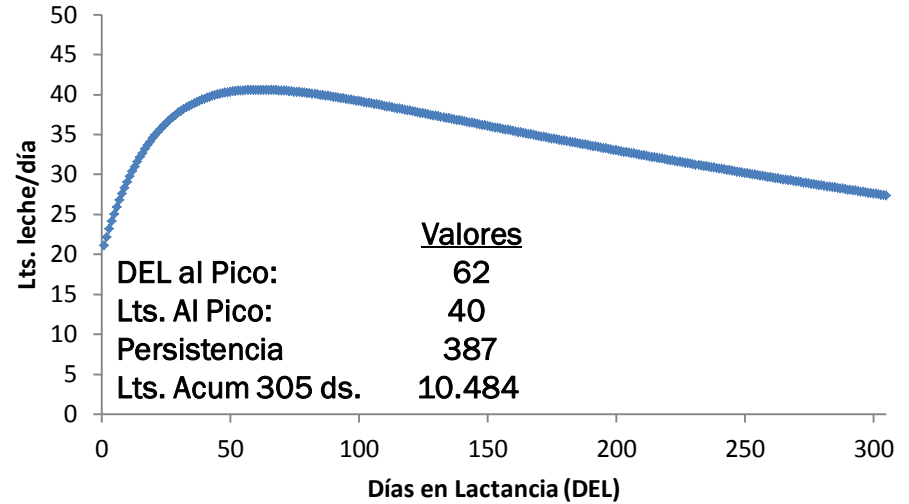


Curvas Promedio

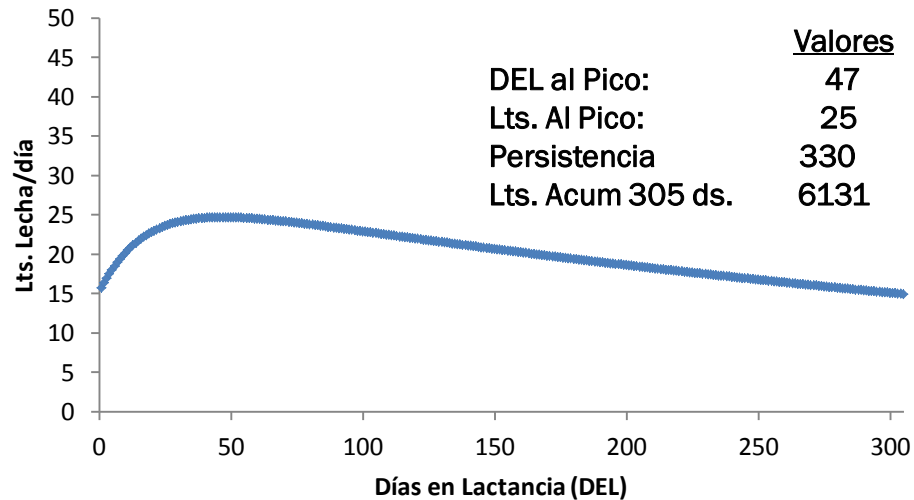
25 Lts.



34 Lts.

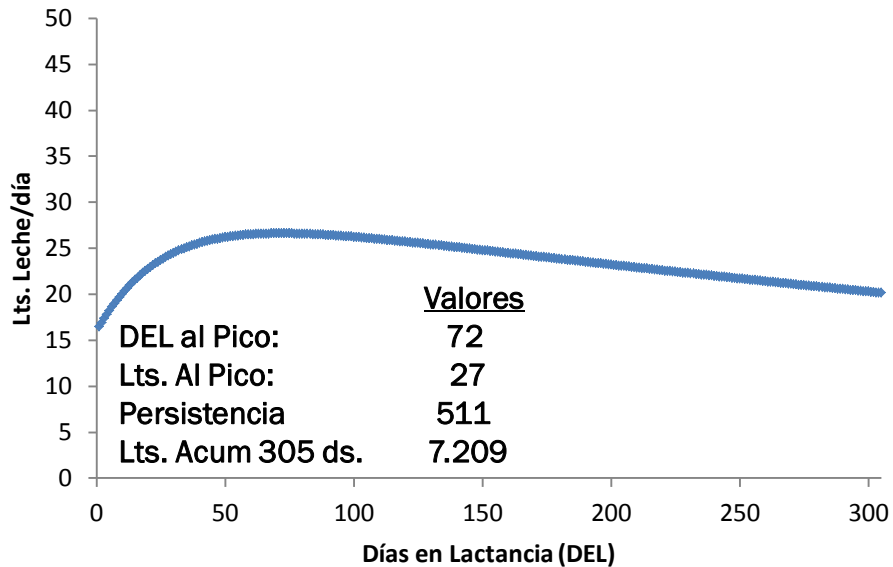


20,5 Lts.

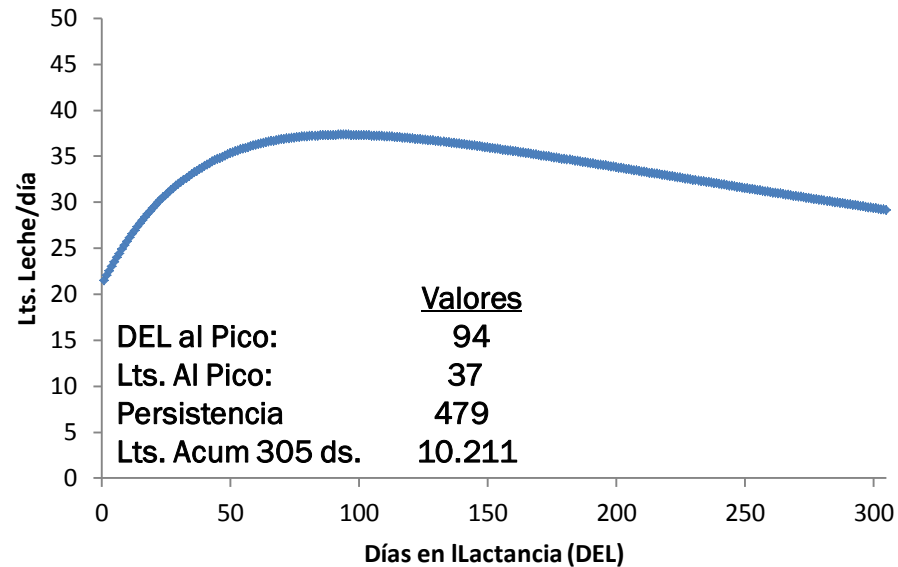


1 Lactancia

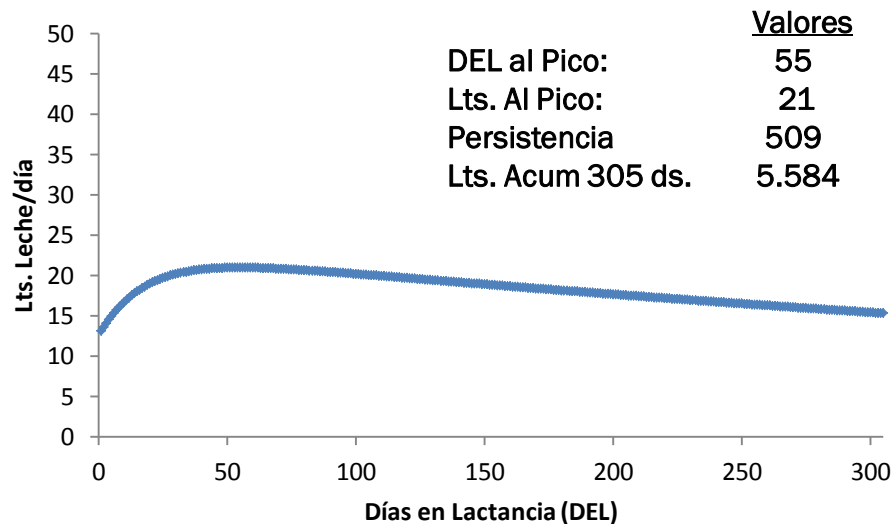
25 Lts.



34 Lts.

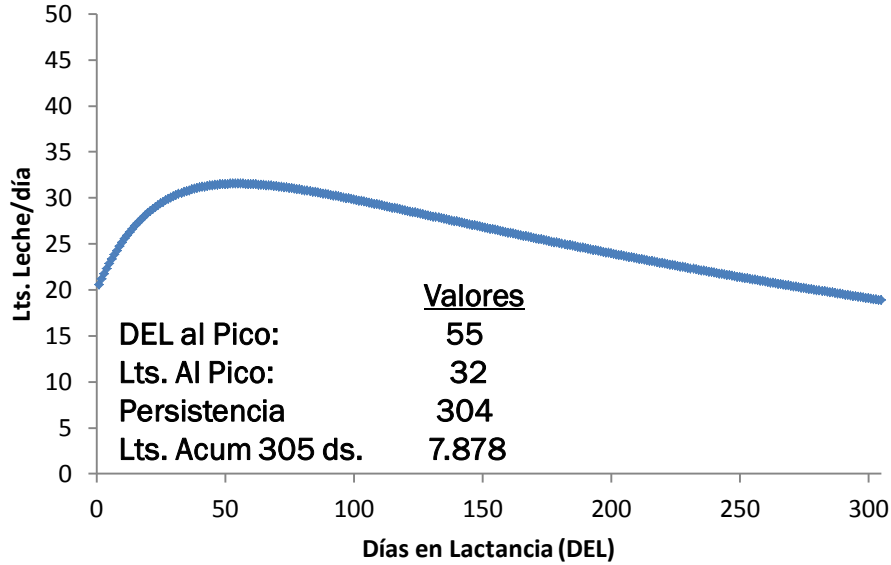


20,5 Lts.

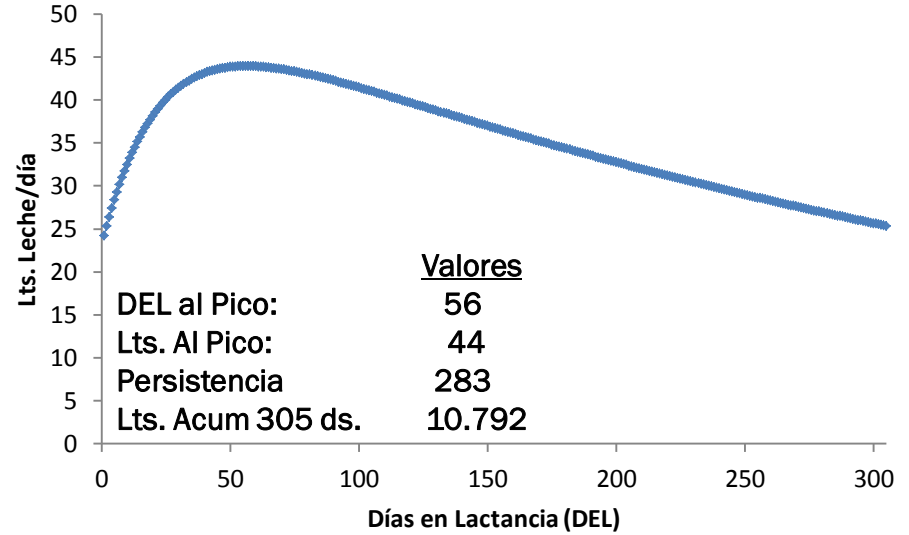


2 Lactancia

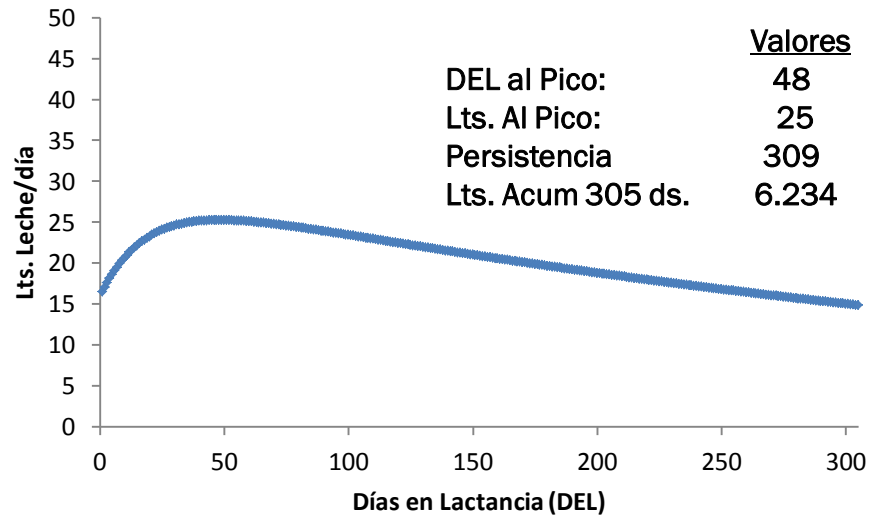
25 Lts.



34 Lts.

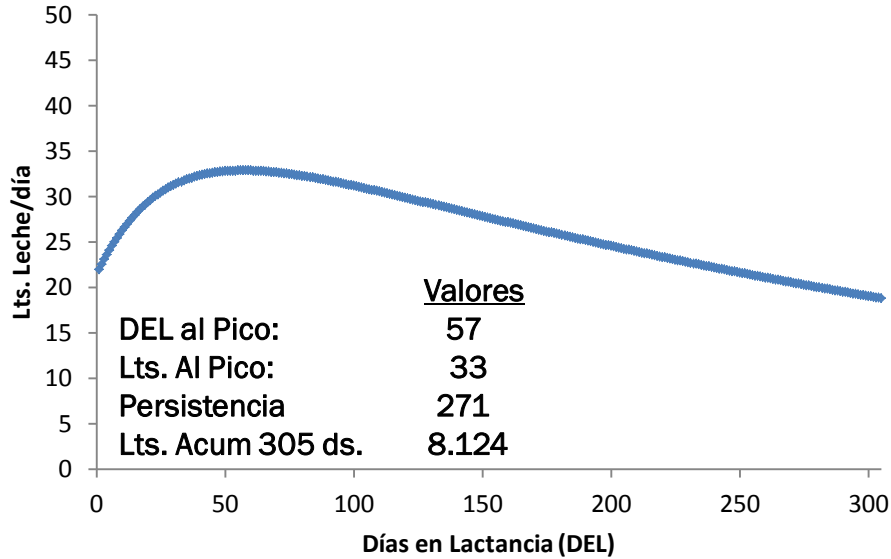


20,5 Lts.

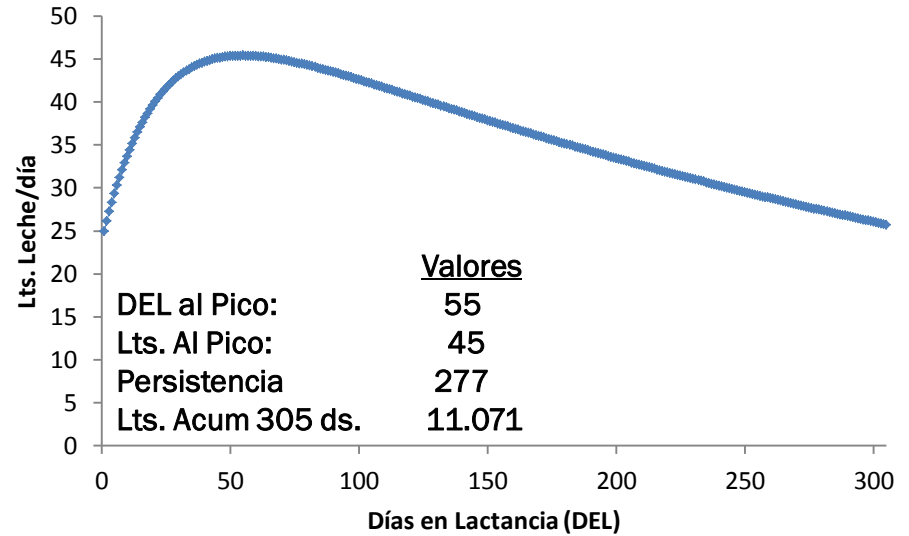


3 Lactancia

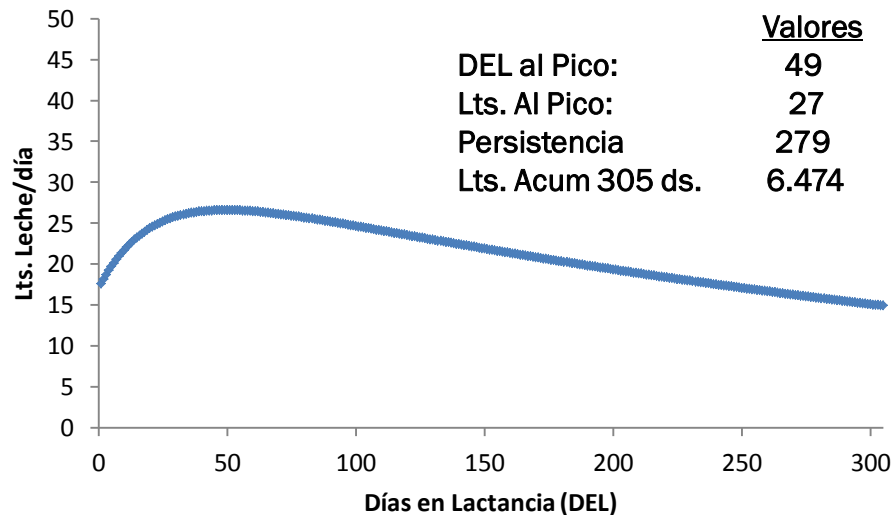
25 Lts.



34 Lts.

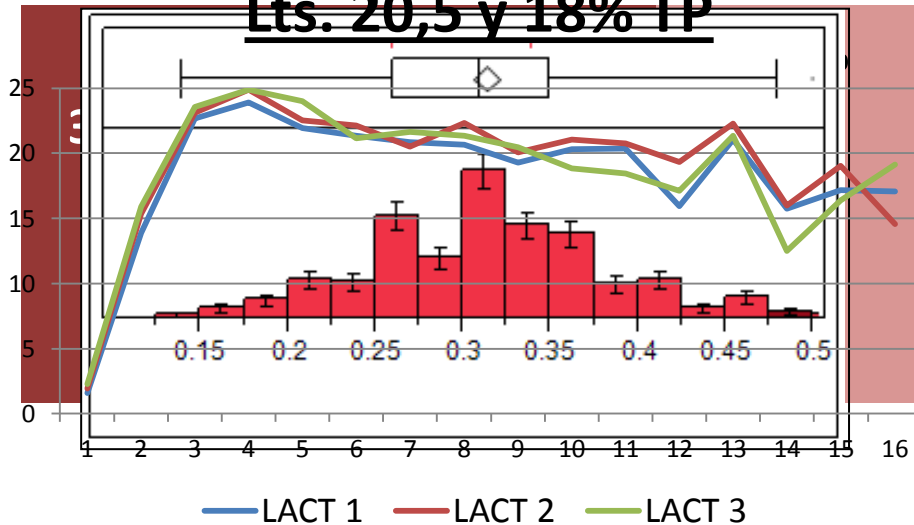


20,5 Lts.

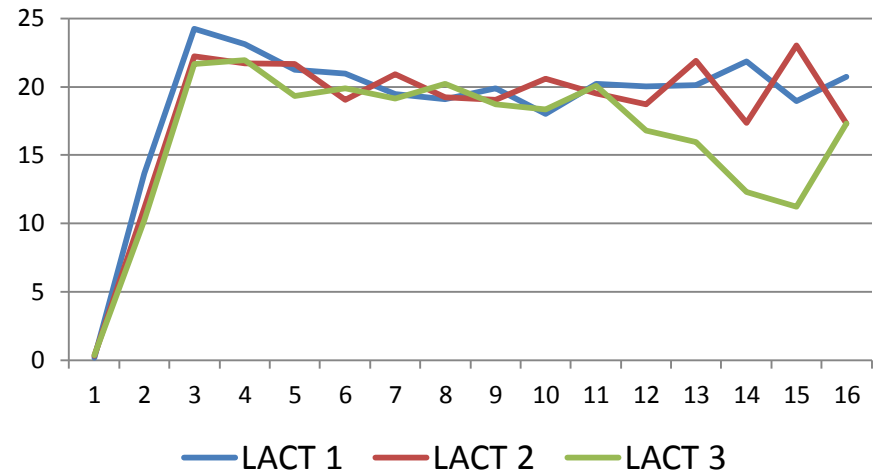


Probabilidad de Preñez (%)

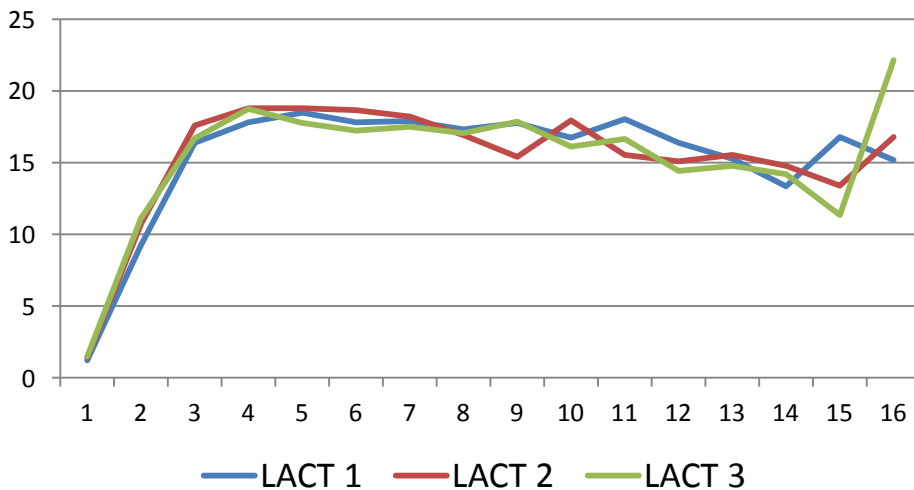
Lts. 20,5 y 18% TP



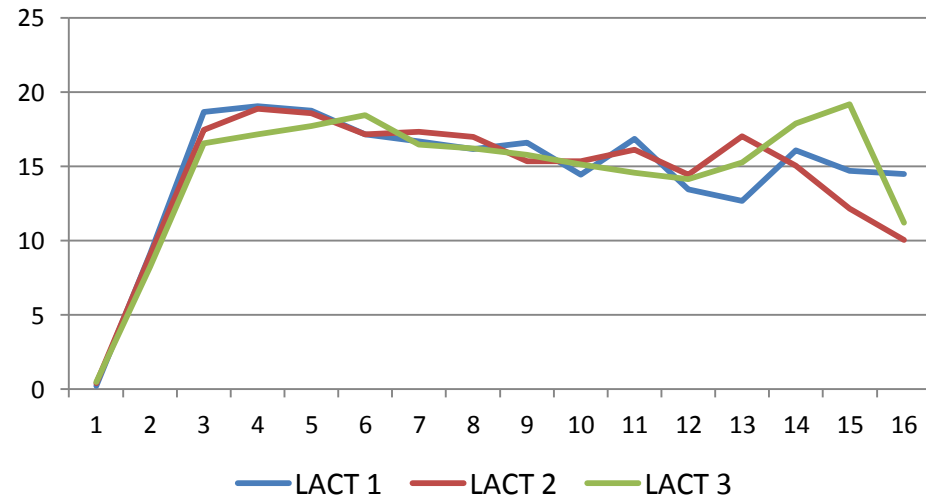
Lts.34 + 25Lts. 18% TP



Lts. 20,5 Lts y 13% TP



25 Lts y 13% TP



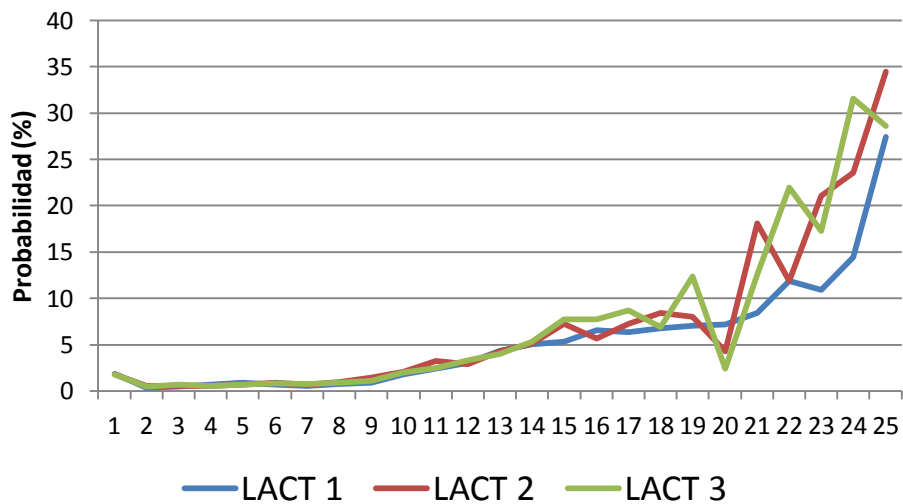
Porcentaje de Bajas General (muertes + ventas):

30%

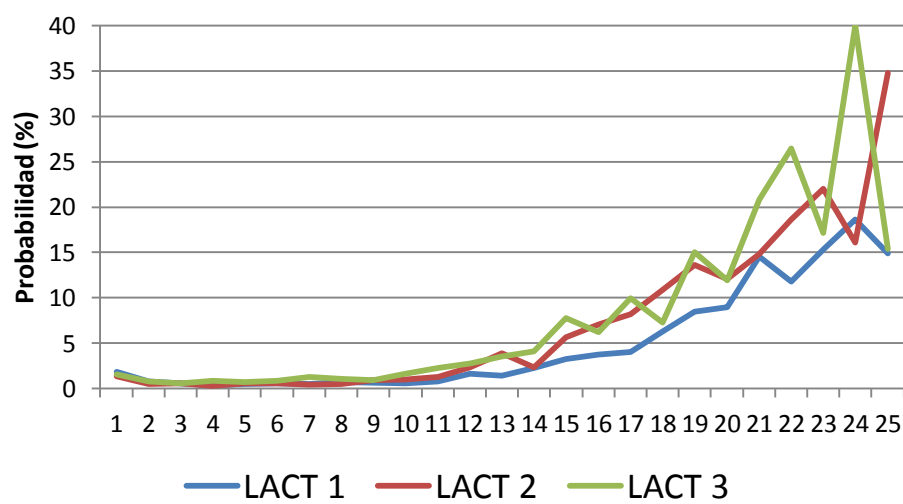
Sistemas	% Bajas	% Muertes
34 Lts. + 25 Lts. y 18% TP	26.8	8.6
20,5 Lts y 18% TP	25.6	7.2
25 Lts. y 13% TP	30.2	10.6
20,5 Lts. y 13% TP	32.1	11.1

Probabilidad de Descarte (%)

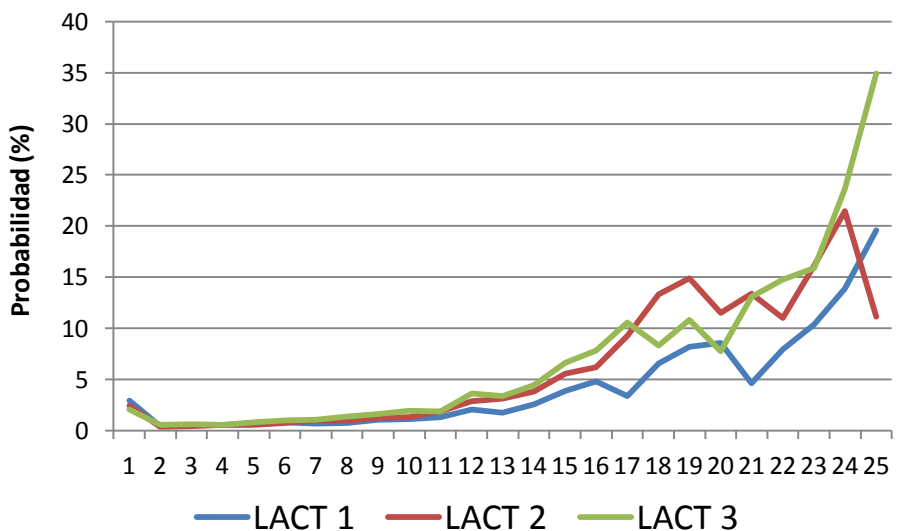
Lts. 20,5 y 18% TP



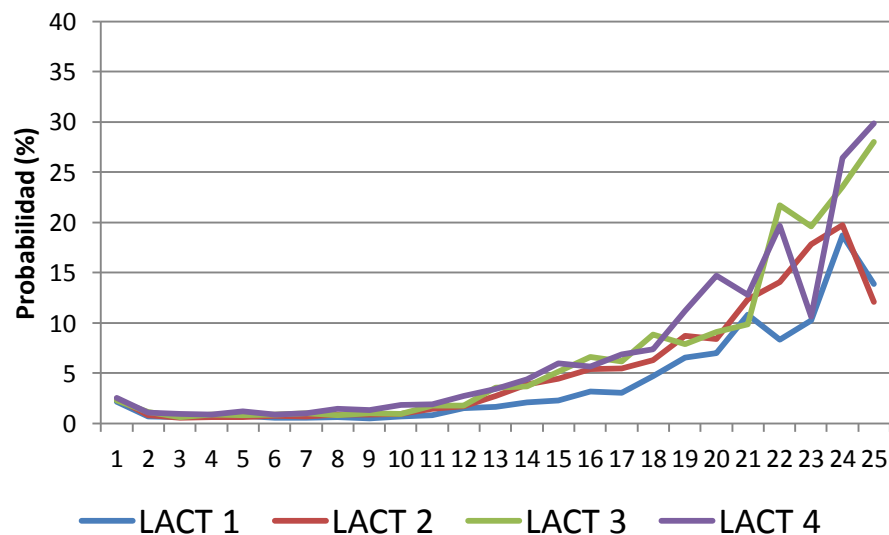
Lts.34 + 25Lts. 18% TP



Lts. 20,5 Lts y 13% TP

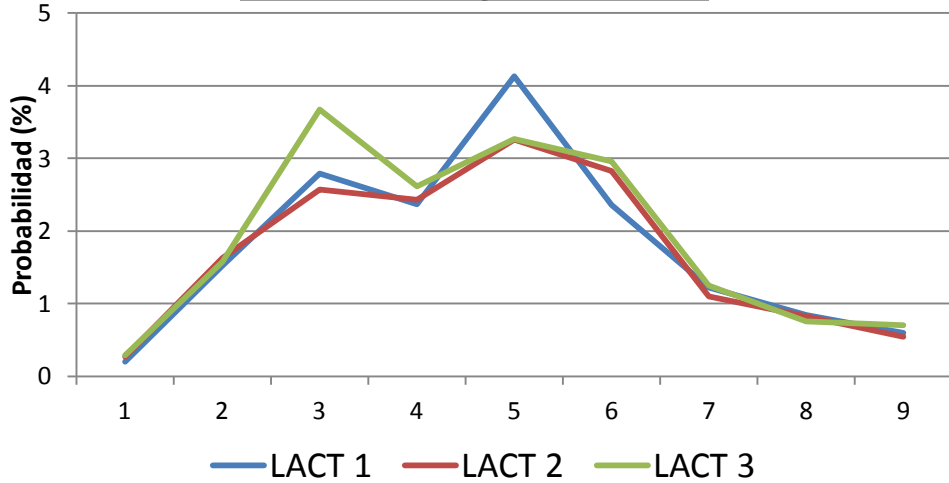


25 Lts y 13% TP

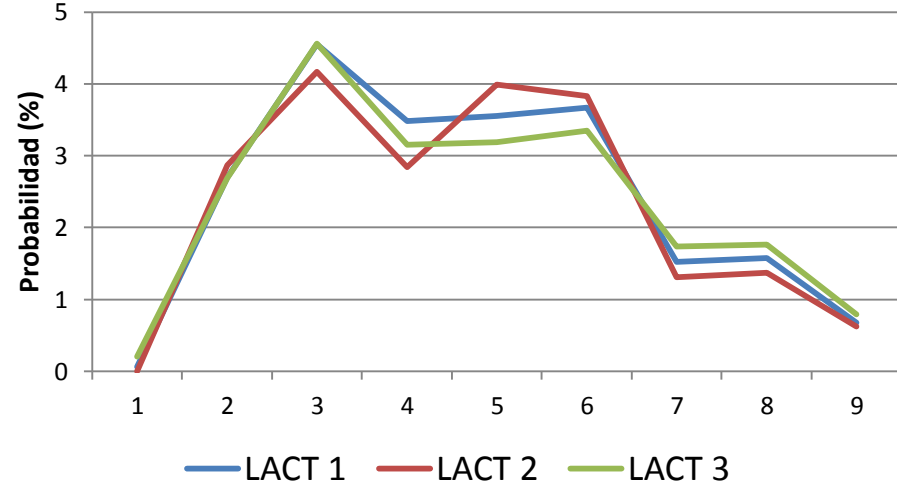


Probabilidad de Aborto (%)

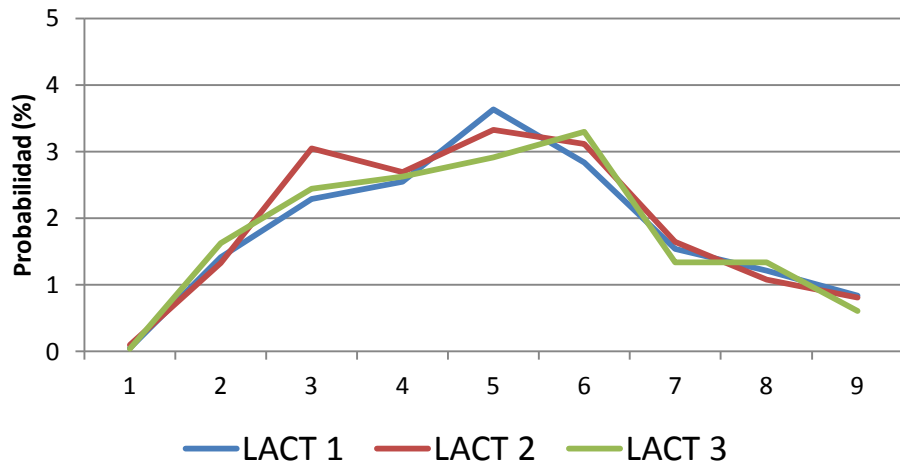
Lts. 20,5 y 18% TP



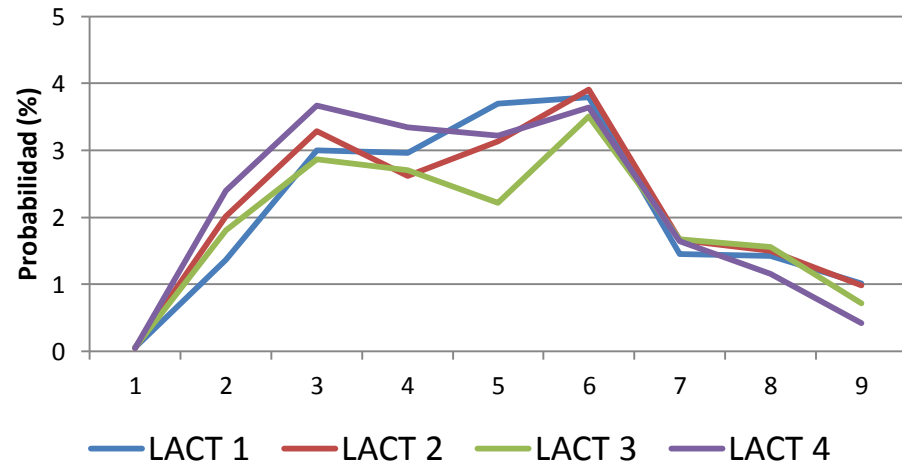
Lts.34 + 25Lts. 18% TP



Lts. 20,5 Lts y 13% TP



25 Lts y 13% TP



Sistemas

Días en promedio de la gestación al Aborto

Días promedio al diagnostico de preñez

34 Lts. + 25 Lts. y 18% TP

20,5 Lts y 18% TP

25 Lts. y 13% TP

20,5 Lts. y 13% TP

114.5

117.5

126.1

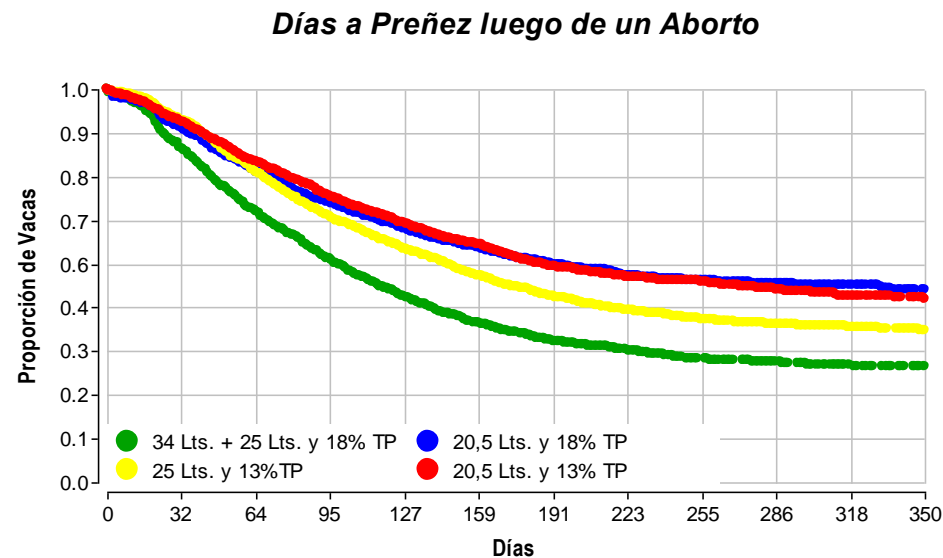
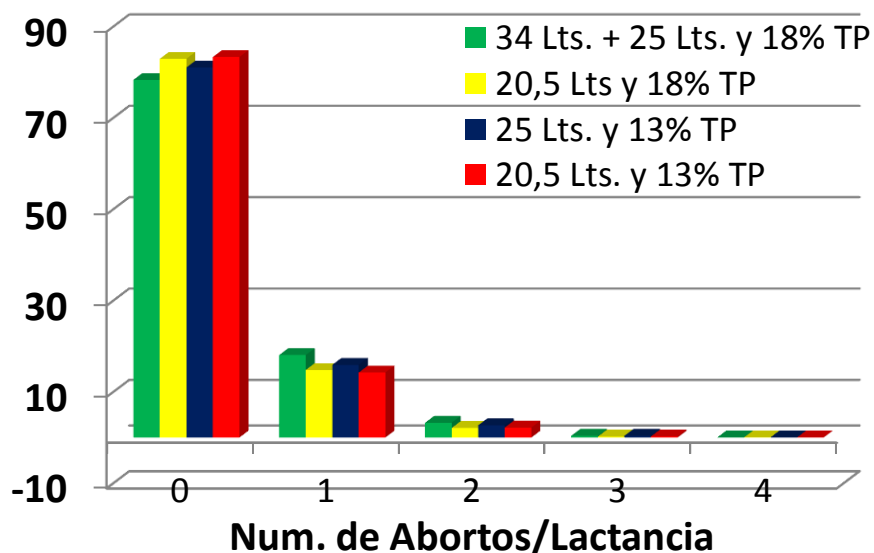
126.6

52

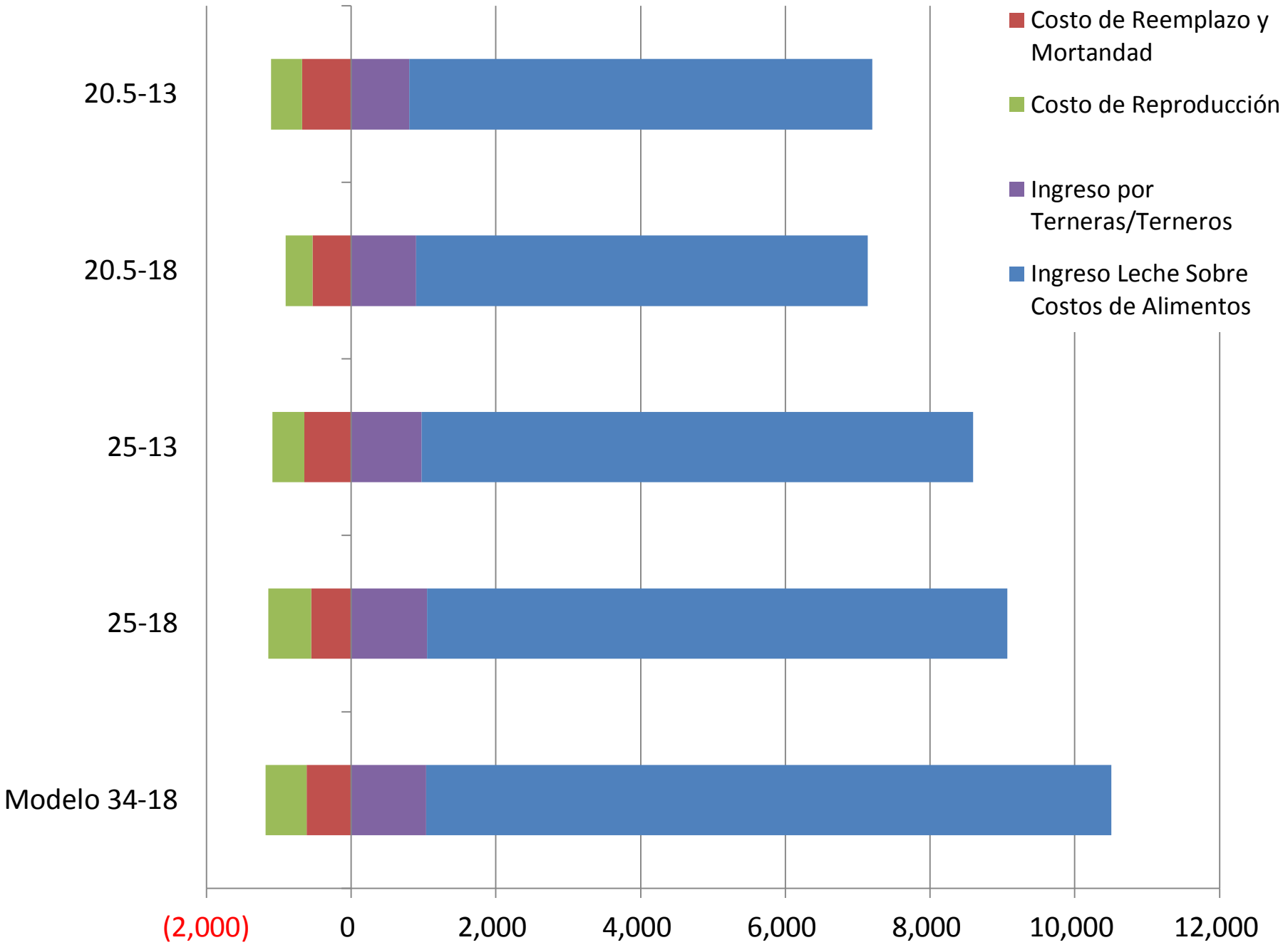
55

60

61



Sistema (Produccion, lts. y Tasa de Preñez a 21 Dias, %)



(2,000)

0

2,000

4,000

6,000

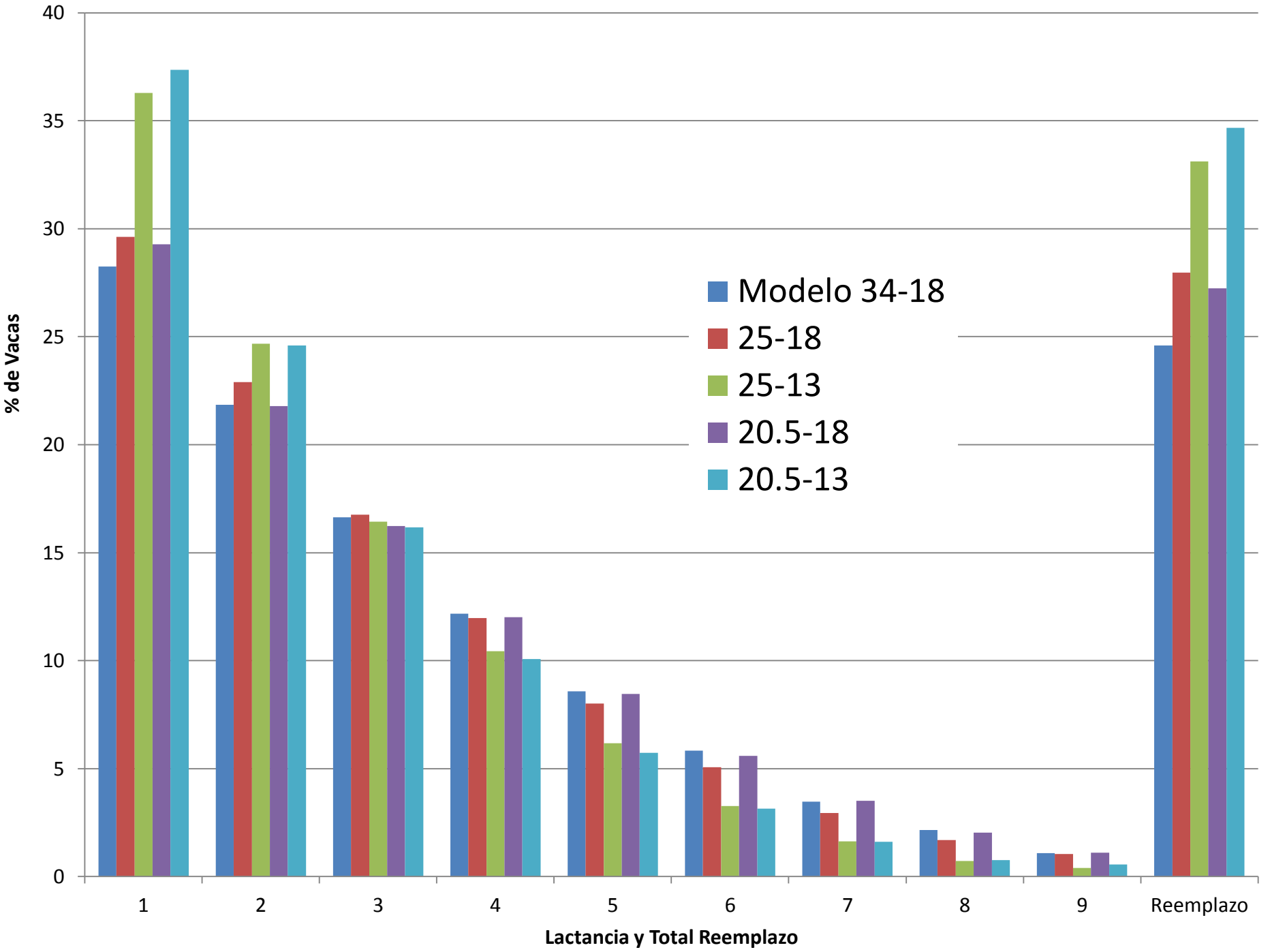
8,000

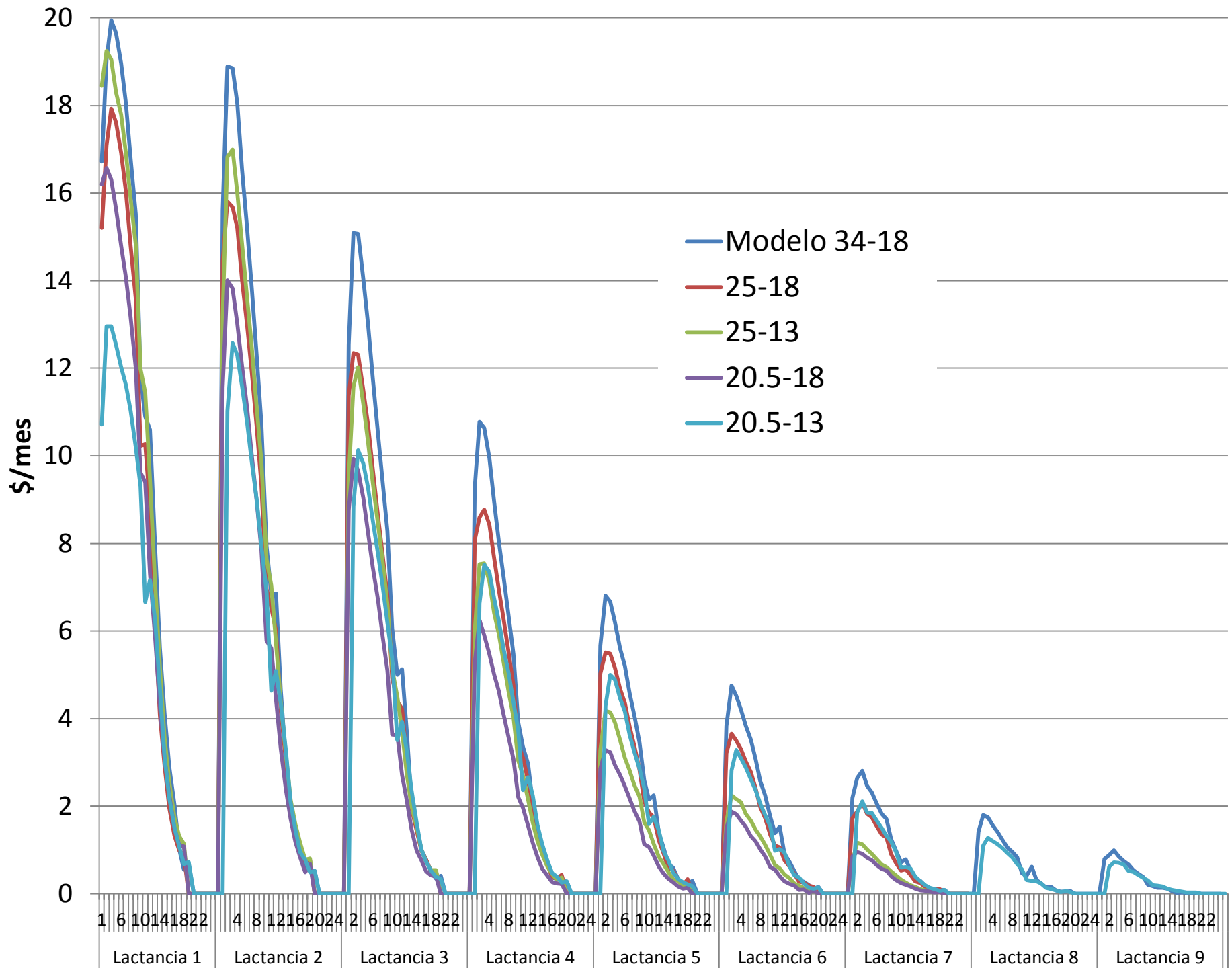
10,000

12,000

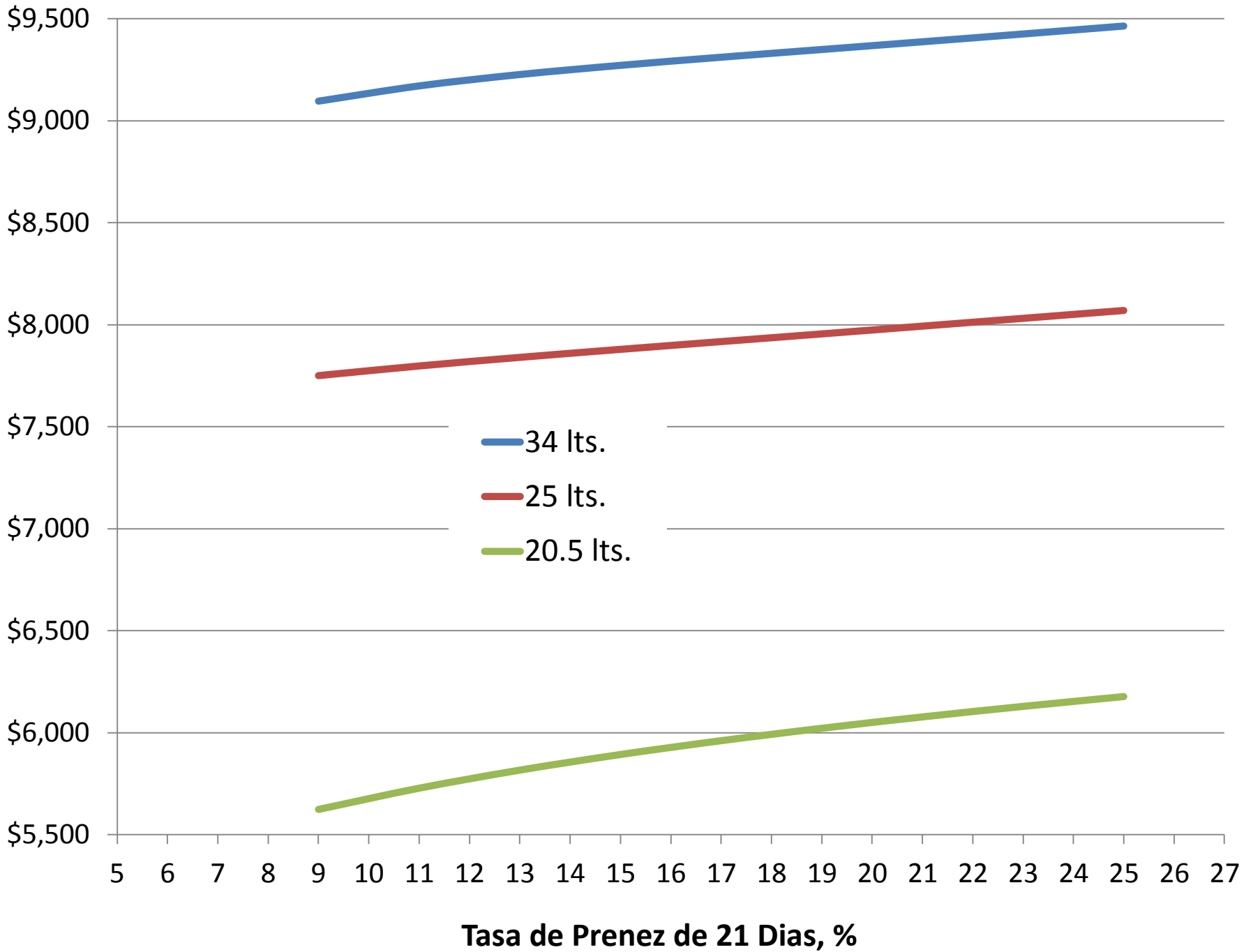
Ingreso Neto, \$/Vaca/Ano

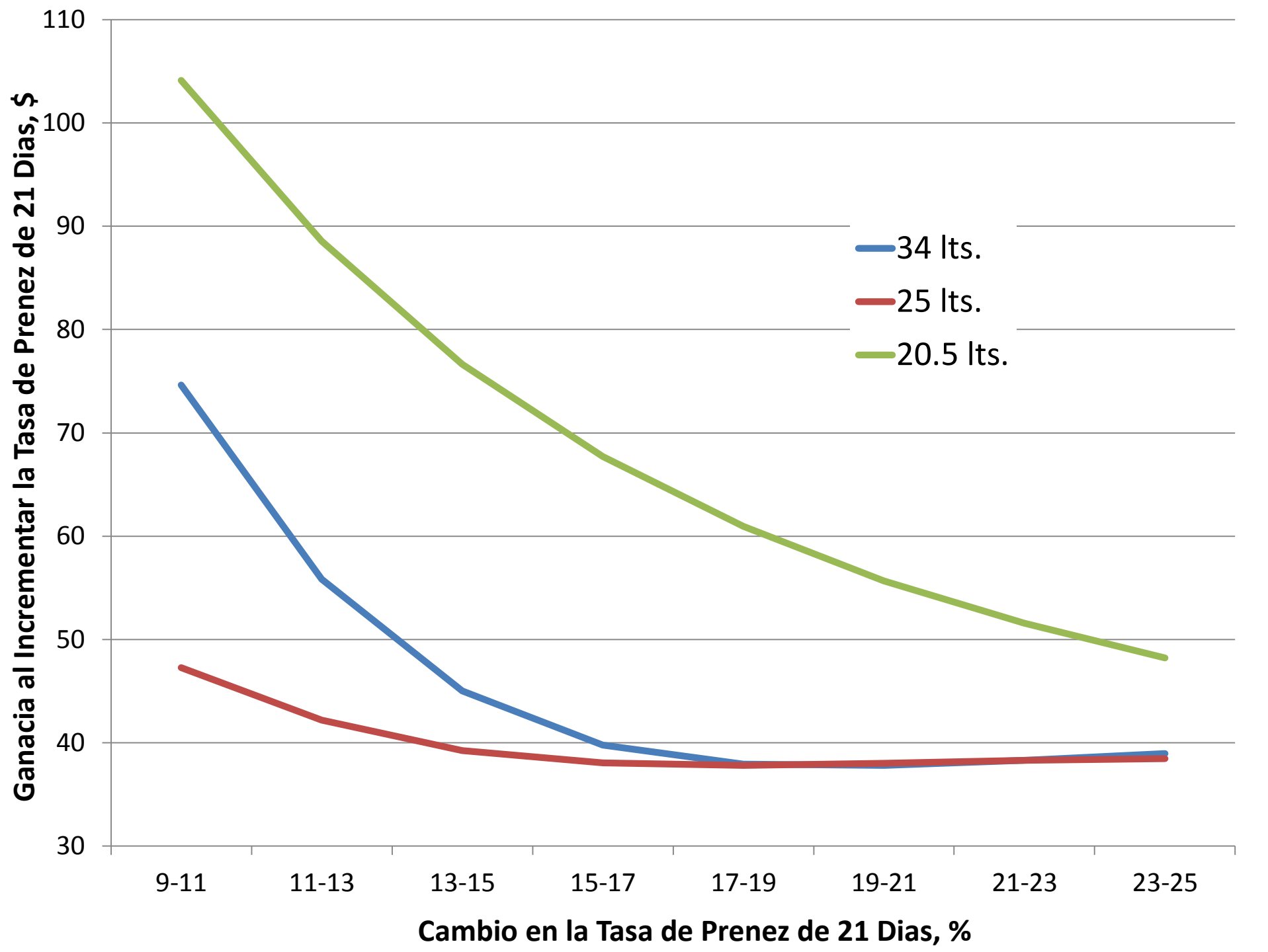
Costo/Ingreso	Ingreso Neto (\$/vaca por año)				
	Modelo	25-34-18	25-18	20.5-18	20.5-13
Ingreso Leche					
Sobre Costos de Alimentos	9,471	8,016	7,622	6,239	6,403
Costo de Reemplazo y Mortandad	(614)	(550)	(645)	(532)	(678)
Costo de Reproducción	(570)	(595)	(439)	(372)	(430)
Ingreso de Terneras/Terberos	1,037	1,052	972	901	802
Total Ingreso Neto	9,324	7,924	7,509	6,236	6,096

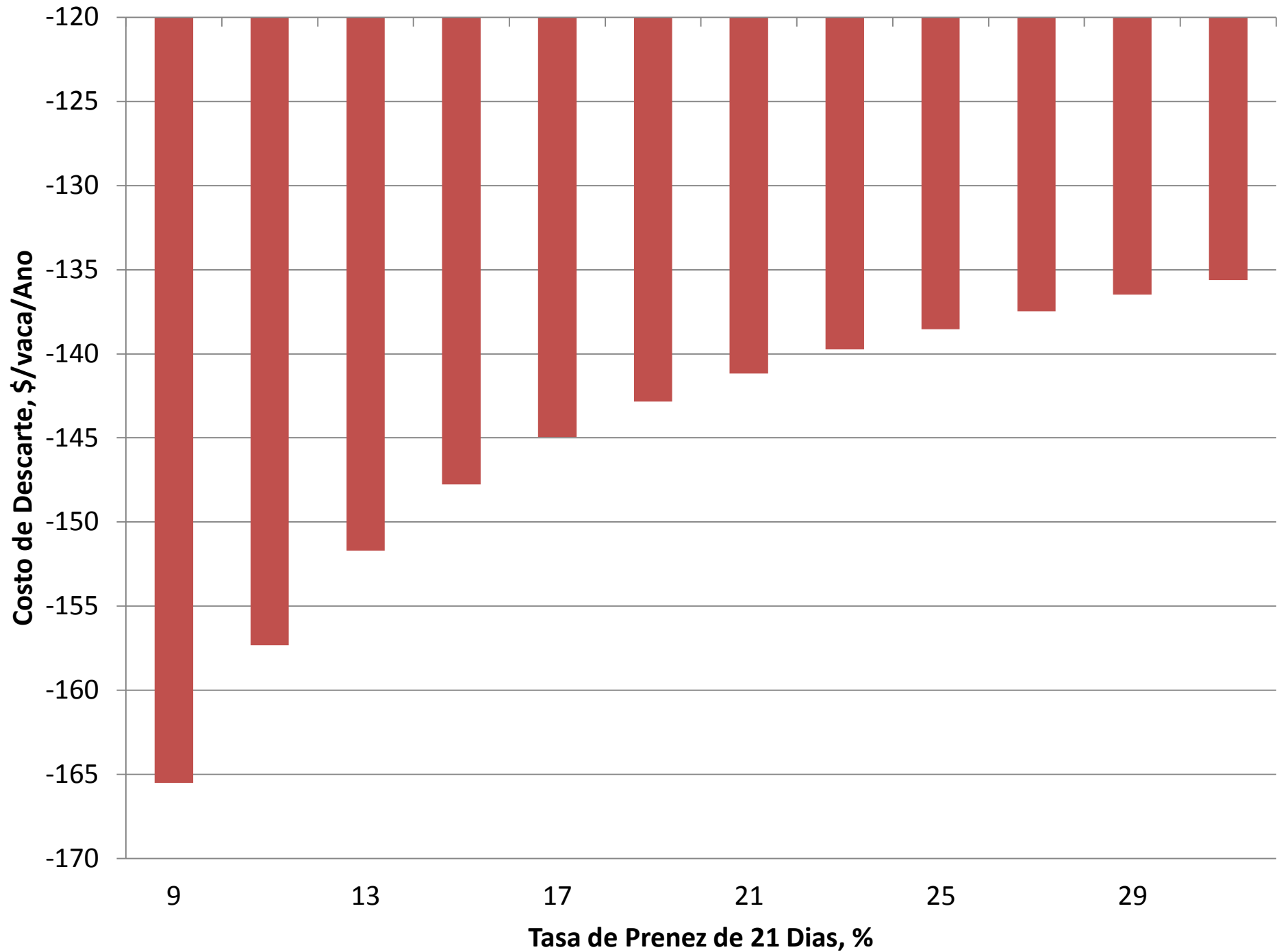


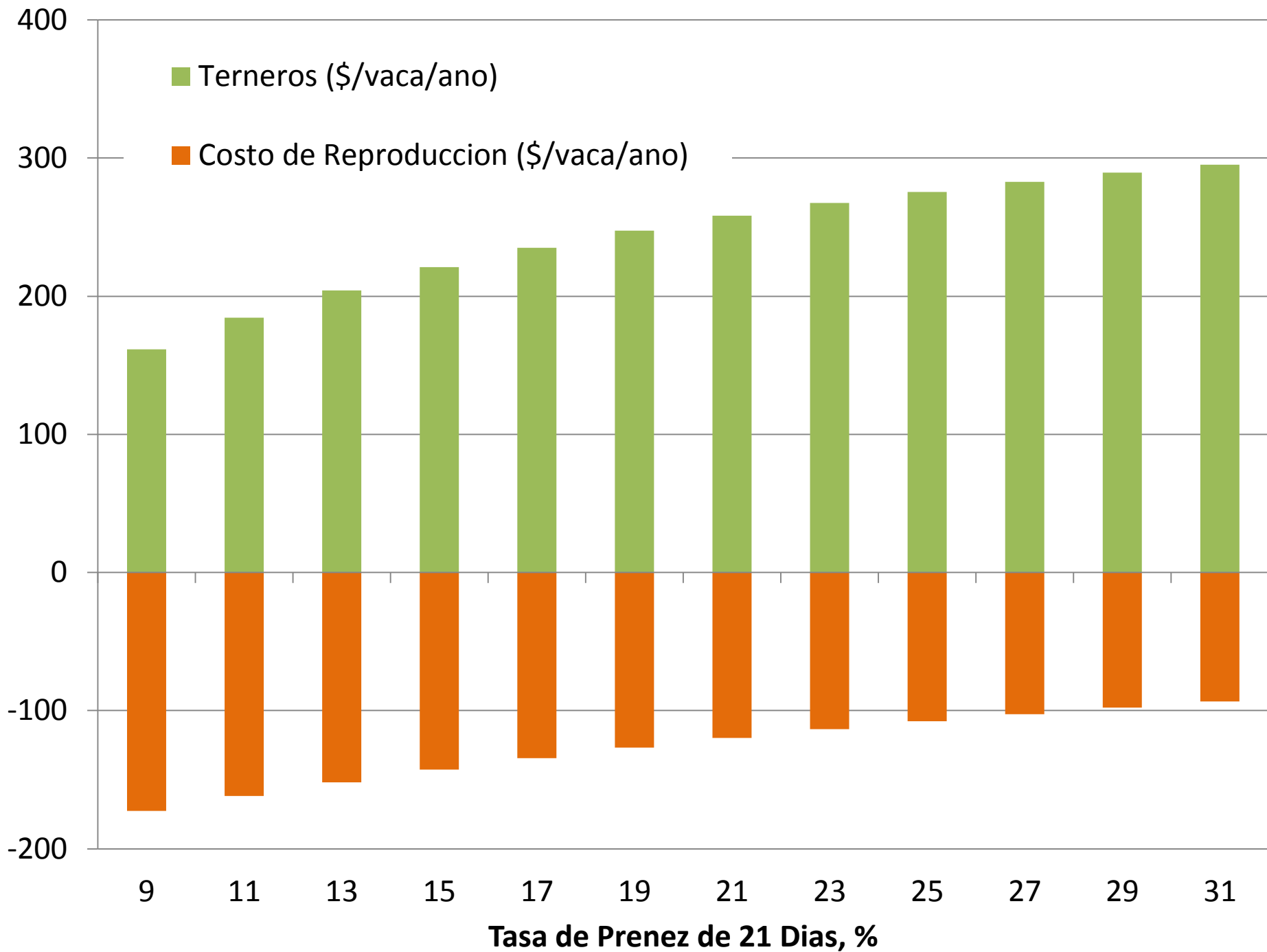


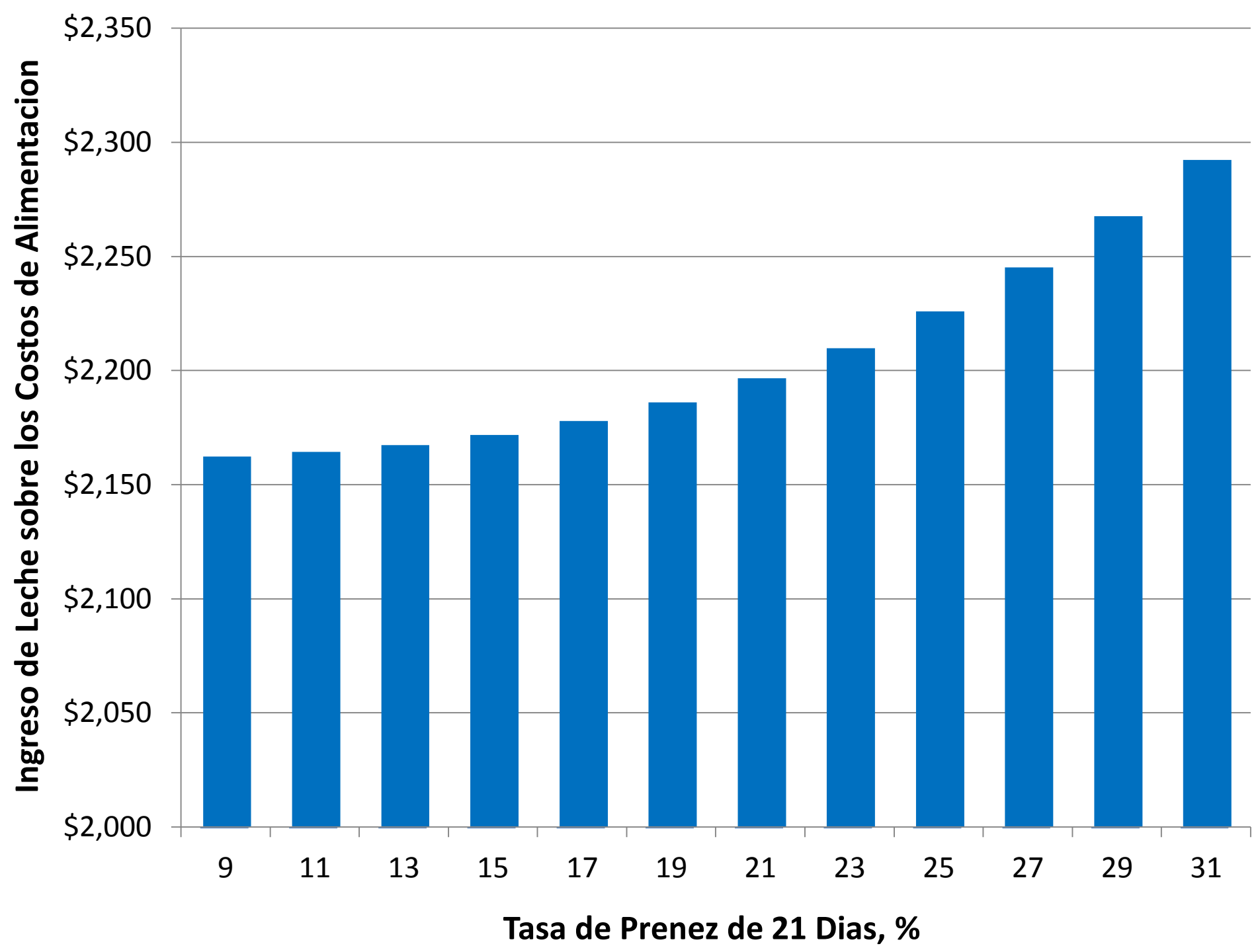
Ingreso Neto, \$/Vaca/Ano

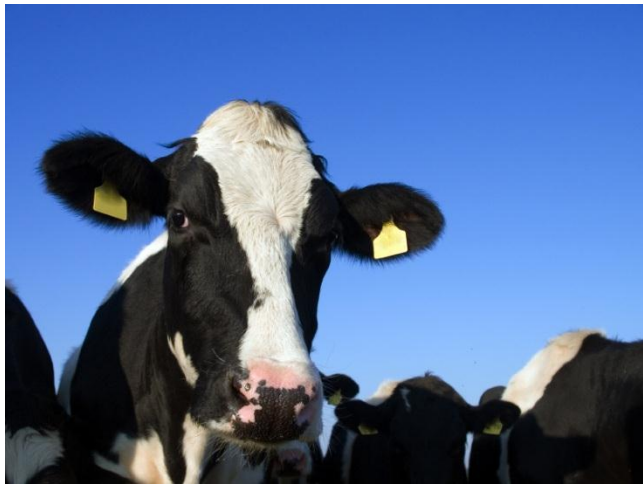








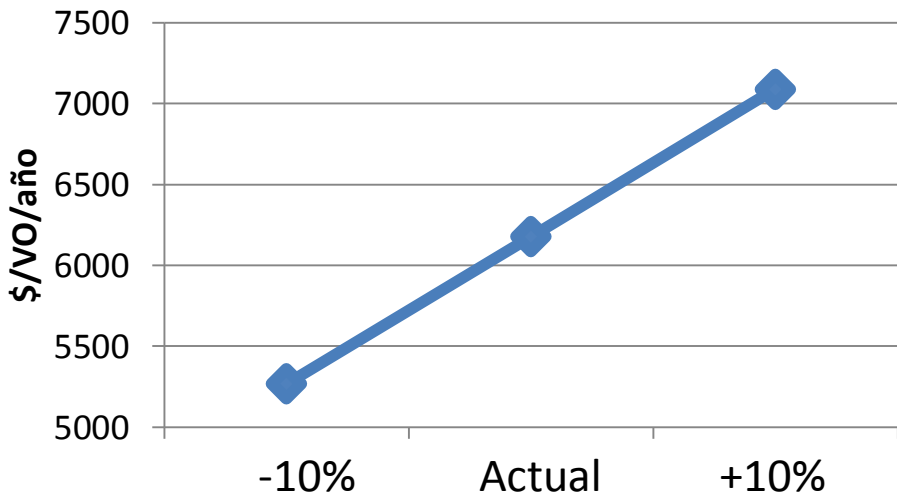




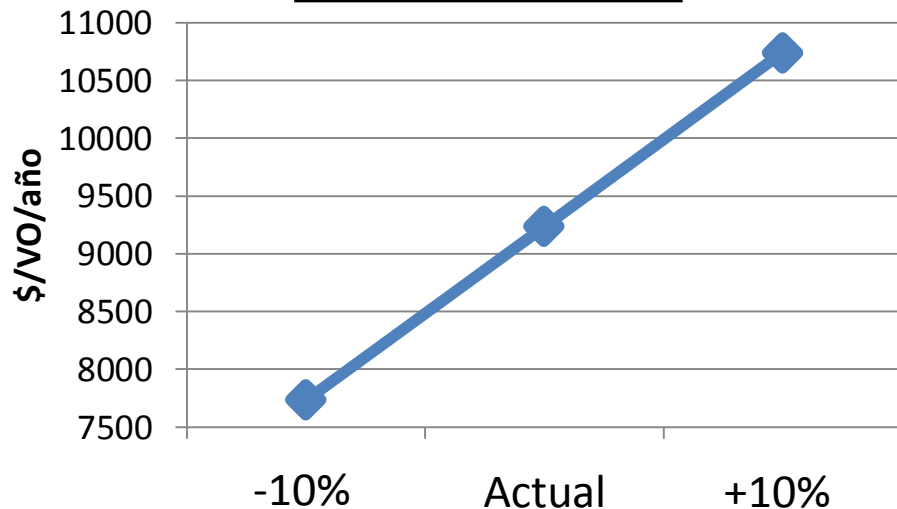
**Qué IMPACTO tiene sobre el Retorno Económico
un cambio en el precio de la leche
en cada sistema?**

Retorno según el % de Aumento o Disminución del \$/Litro de Leche

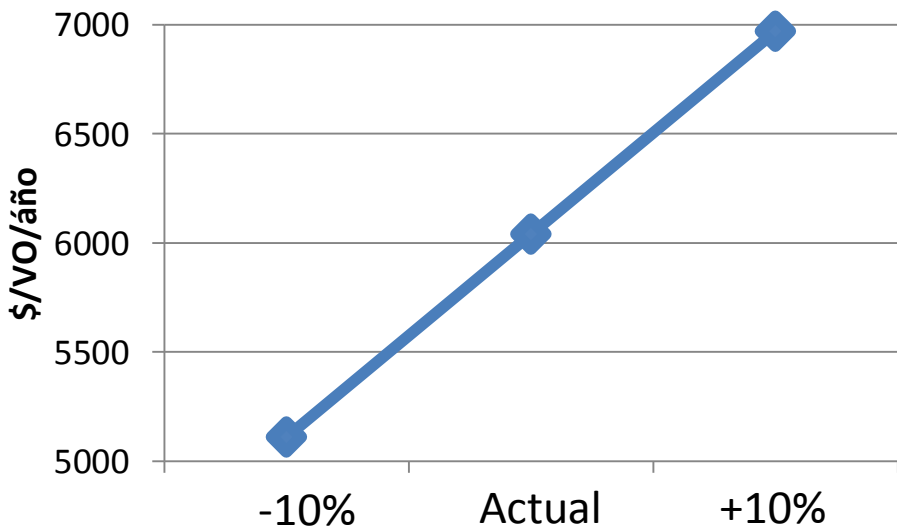
20,5Lts. Y 18%TP



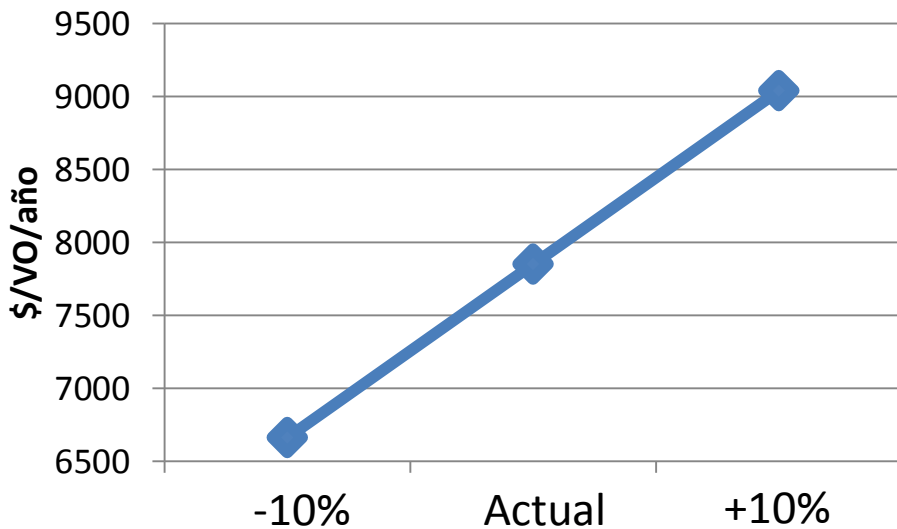
34Lts. Y 18%TP



20,5Lts. Y 13%TP



25Lts. Y 18%TP

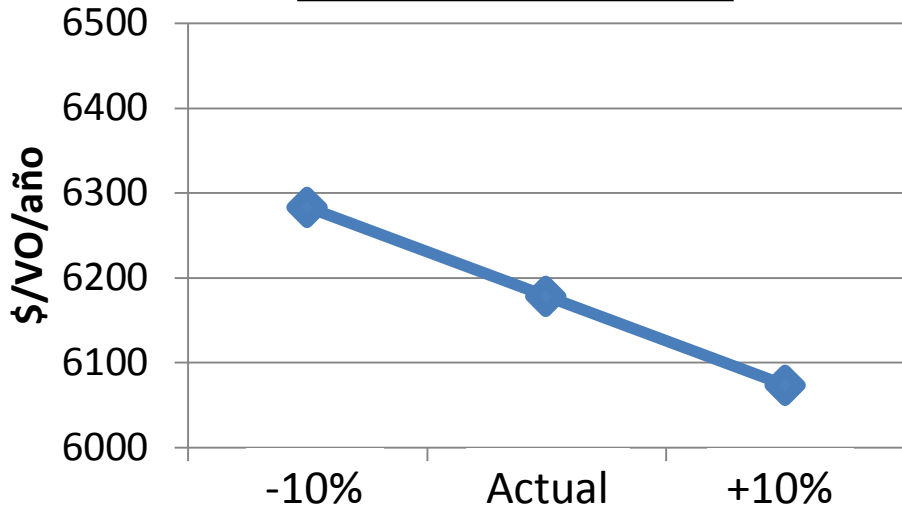


**Qué IMPACTO tiene sobre el Retorno Económico
Una variación del precio de la Vaquilla
de Reemplazo en cada sistema?**

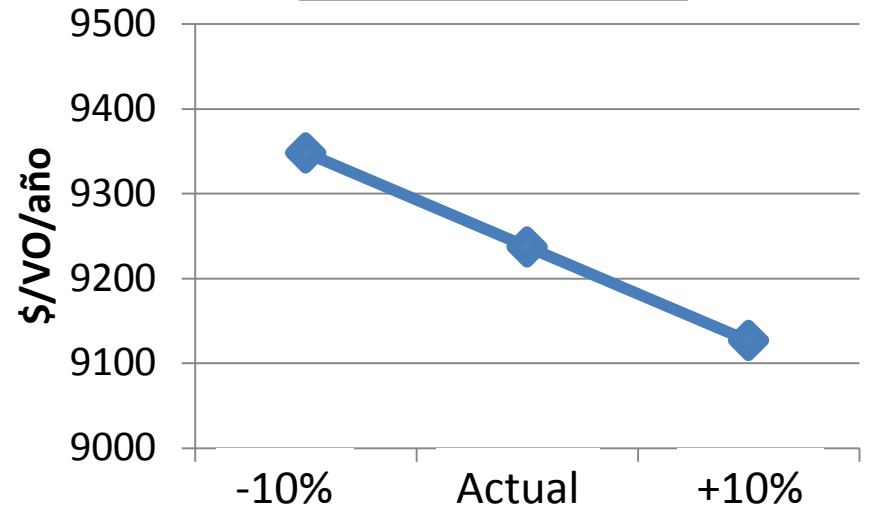


Retorno según el % de Aumento o Disminución del Costo de la Vaquilla de Reemplazo

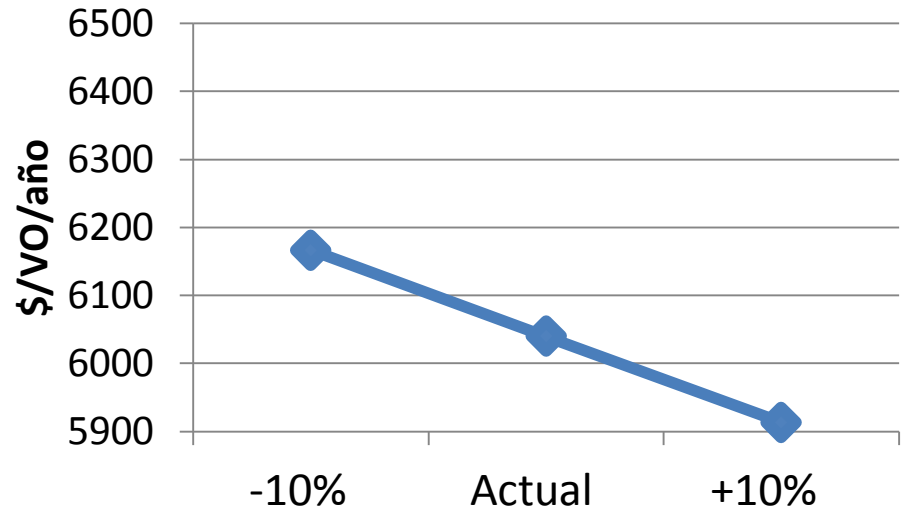
20,5Lts. Y 18%TP



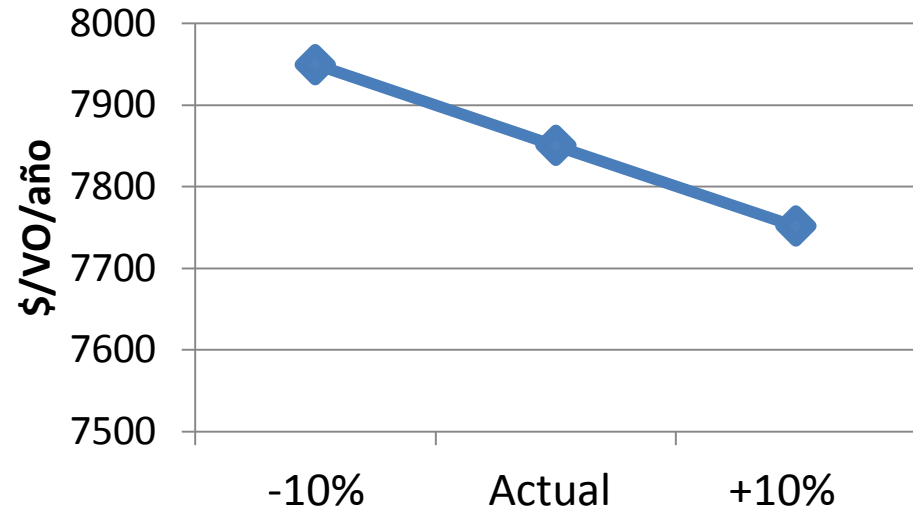
34Lts. Y 18%TP



20,5Lts. Y 13%TP



25Lts. Y 18%TP



MUCHAS GRACIAS